

Panasonic®

Weights and dimensions shown are approximate. Depending on the temperature or humidity conditions, uneven brightness may be observed. This is not a malfunction. This unevenness will disappear while applying current continuously. If not, consult the distributor. Specifications and appearance are subject to change without notice. Product availability differs depending on region and country. This product may be subject to export control regulations. Windows, and PowerPoint are trademarks of Microsoft Corporation in the United States and other countries. Android is a registered trademark or trademark of Google Inc. Macintosh, Mac, Mac OS X, iPad, iPhone, iPod touch and iTunes are trademarks of Apple Inc., registered in the U.S. and other countries. Intel® is registered trademark or trademark of Intel Corporation, registered in the U.S. and other countries and regions or registered trademarks. HDMI, the HDMI logo, and High-Definition Multimedia Interface are trademarks or registered trademarks of HDMI Licensing LLC in the United States and other countries. Crestron Connected™ is a trademark of Crestron Electronics, Inc. Miracast are trademarks or registered trademarks of Wi-Fi Alliance. HDBaseT is a trademark of the HDBaseT Alliance. "LinkRay", "LinkRay" icon and OpenPort PLATFORM are trademarks of Panasonic Corporation. All other trademarks are the property of their respective trademark owners. Images on screen are simulated.

© 2019 Panasonic Corporation. All rights reserved.



Mobile App -
The information of the Panasonic projectors and professional displays from your iOS/Android devices.
panasonic.net/cns/prodisplays/support/mobile_app/



For the latest information about Panasonic Professional Displays, please visit:
Professional Display Global Website - panasonic.net/cns/prodisplays
YouTube - www.youtube.com/PanasonicProDisplay
Facebook - www.facebook.com/panasonicprojectoranddisplay

All information included here is valid as of June 2019

CT19-EG01PF
Printed in Japan.

Panasonic

BUSINESS



Brandenburg Gate Museum



Professional **DISPLAYS** Line-up Catalog June 2019



Worldwide
Olympic Partner



Worldwide
Paralympic Partner



Creating Displays for Tomorrow's Communication. Advanced Solutions Linking People and Information.



Brandenburg Gate Museum



TOTO Showroom



Panasonic Professional Displays Lineup

Standard

SQ1 Series

500cd/m²

98" TH-98SQ1
86" TH-86SQ1

Available from September 2019*

65" TH-65SQ1
55" TH-55SQ1

49" TH-49SQ1
43" TH-43SQ1



*Actual resolution : 3840 x 2160p

LinkRay Compatible Models

SF2H Series

700cd/m²

80" TH-80SF2H
70" TH-70SF2H

SF1H Series

700cd/m²

55" TH-55SF1H
49" TH-49SF1H
42" TH-42SF1H



LF80 Series

700cd/m²

55" TH-55LF80
49" TH-49LF80
42" TH-42LF80

SF2 Series

450cd/m²

65" TH-65SF2
55" TH-55SF2
49" TH-49SF2
43" TH-43SF2



(LF80 Series only)

* TH-65SF2E (for Europe/CIS) and TH-65/55/49/43SF2W (for Asia, Middle East, Africa) only.

OpenPort PLATFORM® Models

AF1 Series

500cd/m²

55" TH-55AF1
49" TH-49AF1
42" TH-42AF1



* The availability varies depending on model.

Entry

EQ1 Series

350cd/m²

86" TH-86EQ1
75" TH-75EQ1

65" TH-65EQ1
55" TH-55EQ1

50" TH-50EQ1
43" TH-43EQ1



*1Actual resolution : 3840 x 2160p

EF1 Series

350cd/m²
(75EF1: 410 cd/m²)

75" TH-75EF1
65" TH-65EF1
32" TH-32EF1

LFE8 Series

350cd/m²

48" TH-48LFE8
43" TH-43LFE8



[Except 75EF1]

Panasonic Professional Displays Lineup

Video Wall

Available from December 2019

VF2H 700cd/m²

55"
TH-55VF2H

VF1H 700cd/m²

55"
TH-55VF1H

Available from December 2019

VF2 500cd/m²

55"
TH-55VF2

LFV70 700cd/m²

55"
TH-55LFV70

Available from October 2019

LFV9 500cd/m²

55"
TH-55LFV9

LFV8 500cd/m²
(TH-49LFV8: 450 cd/m²)

55"
TH-55LFV8

49"
TH-49LFV8

LFV6 500cd/m²

55"
TH-55LFV6



Touch Screen

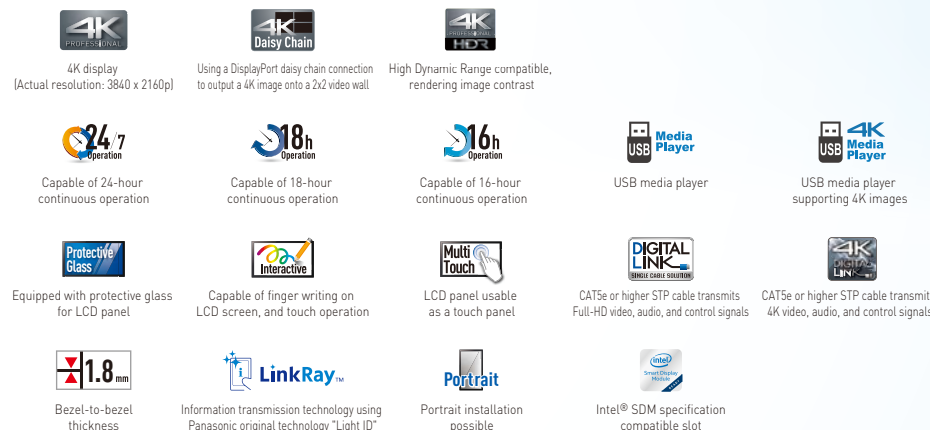
BQE1/
BFE1 400cd/m²

75" TH-75BQE1
65" TH-65BFE1



[BQE1 only]
*Actual resolution: 3840 x 2160p

Pict Descriptions



Model Number Legend

TH-86SQ1

TH: Display body
86: Screen size
S/L: Standard
E/C: Entry
V: Video wall
B: Touch screen

F: Full HD
Q: 4K UHD



Model no.	TH-98SQ1	TH-86SQ1
Screen Size (Diagonal)/Aspect Ratio	98-inch (2476.9 mm)/16:9	86-inch (2174.2 mm)/16:9
Panel Type	IPS / Direct LED	IPS / Edge LED
Effective Display Area (W x H)	2158.8 x 1214.3 mm (84.99" x 47.80")	1895.0 x 1065.9 mm (74.60" x 41.96")
Resolution (H x V)	3840 x 2160	3840 x 2160
Brightness (Typ)	500 cd/m ²	500 cd/m ²
Contrast Ratio	1300:1	1200:1
Dynamic Contrast Ratio	50000:1	50000:1
Response Time	8 ms (G to G)	8 ms (G to G)
Viewing Angle (Horizontal/Vertical)	178°/178° (CR≥10)	178°/178° (CR≥10)
Panel Surface Treatment	Anti-Glare (Haze 28 %)	Anti-Glare (Haze 28 %)
HDMI In	HDMI TYPE-A Connector x 2 ¹	
DisplayPort In	DisplayPort x 1	
DisplayPort Out	DisplayPort x 1	
USB	USB Connector (TYPE-A) x 2, DC 5 V/2 A, DC 5V/1A (USB 3.0 Supported)	
DVI-D In	DVI-D 24-pin x 1	
Audio In (L/R)	Stereo Mini Jack (M3) x 2 (Shared with PC In)	
PC In	Mini D-sub 15-pin x 1 (Female) ²	
Audio In (L/R)	Stereo Mini Jack (M3) x 2 (Shared with DVI-D In)	
Audio Out	Stereo Mini Jack (M3) x 1	
Serial In	D-sub 9-pin x 1, RS232C Compatible	
LAN	RJ45 x 1, 10 BASE-T / 100 BASE-TX, Compatible with PLink™	
DIGITAL LINK	RJ45 x 1, 100 BASE-TX, Compatible with long reach mode and PLink™	
IR In/Out	Stereo Mini Jack (M3) x 1 / x 1	
Function Slot	x1 (Intel® SDM Specification Capability)	
Power Requirements	220-240 V AC, 50 Hz/60 Hz	
Power Consumption	685 W	480 W
Power Off Condition	Approx. 0.3 W	Approx. 0.3 W
Stand-by Condition	Approx. 0.5 W	Approx. 0.5 W
Dimensions (W x H x D)	2194 x 1249 x 90*mm (86.35" x 49.15" x 3.54"*)	1928 x 1099 x 86*mm (75.91" x 43.27" x 3.39"*)
Carton Size (W x H x D)	2513 x 1704 x 450 mm (98.9" x 67.1" x 17.7")	2224 x 1427 x 373 mm (87.6" x 56.2" x 14.7")
Bezel Width	16.0 mm (0.63") (T/B/L/R)	15.2 mm (0.6") (T/B/L/R)
Weight	Approx. 90.0 kg (198.5 lbs.)	Approx. 66.0 kg (145.5 lbs.)
Gross Weight	Approx. 138.0 kg (304.3 lbs.)	Approx. 89.0 kg (196.3 lbs.)
Pitch for Wall-Hanging	800 x 500 mm (31.5" x 19.7") VESA Compliant	600 x 400 mm (23.6" x 15.8") VESA Compliant
Protective Glass	—	
Built-in Speaker	20 W [10 W + 10 W]	
Orientation	Landscape/Portrait	
Tilting Angle	0-20 degrees forward/backward with landscape/portrait setting	
Operating Environment	Temperature : 0 °C to 40 °C (32°F to 104°F) / Humidity: 20% to 80% (Non-condensation)	
Storage Environment	Temperature : -20 °C to 60 °C (4°F to 140°F) / Humidity: 20% to 80% (Non-condensation)	
Operating Time ³	24 h/day	
Wall-hanging Bracket	TY-WK98PV1	TY-WK98PV1
Early Warning Software ⁴	ET-SWA100/105 Series	ET-SWA100/105 Series
Digital Interface Box	ET-YFB100G	ET-YFB100G
DIGITAL LINK Switcher	ET-YFB200G	ET-YFB200G
Auto Display Adjustment Upgrade Kit ⁵	TY-VUK10	TY-VUK10

*1: HDCP2.2 supported. *2: RGB/YPbPr switchable.

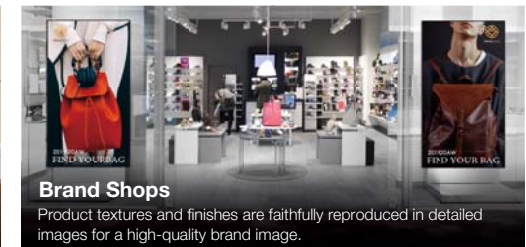
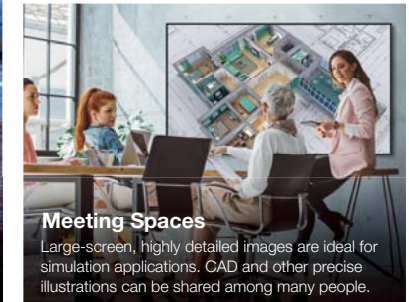
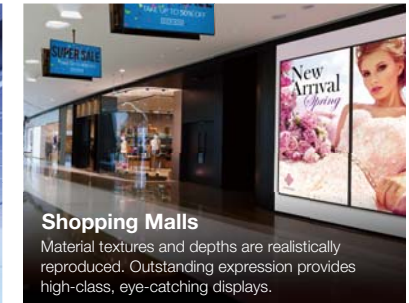
*3: In case of long time, the moving image is recommended to be displayed. If you display a still picture for an extended period, the image retention might remain on the screen. However, image retention can gradually disappear by displaying a moving images.

*4: Multi Monitoring & Control Software Ver.2.0 or later is required. Part number suffix may differ depending on the license type.

*5: Download the latest Video Wall Manager from Global Website in advance. (<https://panasonicnet/cns/prodisplays/download/software/vwm/>)

★The handle part excluded, the thickness is 81 mm (3.17"; TH-98SQ1)/76 mm (2.99"; TH-86SQ1).

A wide range of professional applications



SQ1 Series

Available from September 2019*

* The availability varies depending on model.



Standard

Model no.	TH-65SQ1	TH-55SQ1	TH-49SQ1	TH-43SQ1
DISPLAY PANEL				
Screen size (Diagonal)/Aspect Ratio	65-inch (1638.9 mm) /16:9	55-inch (1387.8 mm) /16:9	49-inch (1232.0 mm) /16:9	43-inch (1079.8 mm) (TBD) /16:9
Panel Type	IPS/Edge LED	IPS/Edge LED	IPS/Edge LED	IPS/Edge LED
Effective Display Area (W x H)	1428.4 x 803.5 mm (56.23" x 31.63")	1209.6 x 680.4 mm (47.62" x 26.78")	1073.8 x 604.0 mm (42.27" x 23.77")	941.1 x 529.4 mm (37.05" x 20.84") (TBD)
Resolution (H x V)	3840 x 2160	3840 x 2160	3840 x 2160	3840 x 2160
Brightness	500 cd/m ²	500 cd/m ²	500 cd/m ²	500 cd/m ²
Contrast Ratio	1100:1	1100:1	1100:1	1000:1
Response Time	8.0 ms (G to G)	8.0 ms (G to G)	8.0 ms (G to G)	8.0 ms (G to G)
Viewing Angle (Horizontal/Vertical)	178° / 178° (CR≥10)	178° / 178° (CR≥10)	178° / 178° (CR≥10)	178° / 178° (CR≥10)
Panel Surface Treatment	Anti-Glare (Haze 28 %)	Anti-Glare (Haze 28 %)	Anti-Glare (Haze 28 %)	Anti-Glare (Haze 28 %)
TERMINAL				
HDMI In	HDMI TYPE A Connector x 2 (HDCP2.2 supported)		HDMI TYPE A Connector x 2 (HDCP2.2 supported)	
DisplayPort In	DisplayPort x 1 (HDCP2.2 supported)*1		DisplayPort x 1 (HDCP2.2 supported)*1	
DisplayPort Out	DisplayPort x 1 (HDCP1.4 supported)*1		DisplayPort x 1 (HDCP1.4 supported)*1	
USB	USB Connector (TYPE-A) x 2, DC 5 V/2 A, DC 5V/1A (USB 3.0 Supported)		USB Connector (TYPE-A) x 2, DC 5 V/2 A, DC 5V/1A (USB 3.0 Supported)	
DVI-D In	DVI-D 24-pin x 1 (DVI Revision 1.0 Compliant), HDCP 1.1 compatible		DVI-D 24-pin x 1	
Audio In (L/R)	Stereo Mini Jack (M3) x 2 (Shared with PC In)		Stereo Mini Jack (M3) x 2 (Shared with PC In)	
PC In	Mini D-sub 15-pin x 1 (Female)		Mini D-sub 15-pin x 1 (Female)	
Audio In (L/R)	Stereo Mini Jack (M3) x 2 (Shared with DVI-D In)		Stereo Mini Jack (M3) x 2 (Shared with DVI-D In)	
Audio Out	30 W (15 W + 15 W) 10% THD		30 W (15 W + 15 W) 10% THD	
Serial In	D-Sub 9-pin x 1, RS232C Compatible		D-Sub 9-pin x 1, RS232C Compatible	
DIGITAL LINK	RJ45 x 1, 100 BASE-TX, Compatible with long reach mode and PLink™		RJ45 x 1, 100 BASE-TX, Compatible with long reach mode and PLink™	
LAN	RJ45 x 1, 10 BASE-T / 100 BASE-TX, Compatible with PLink™		RJ45 x 1, 10 BASE-T / 100 BASE-TX, Compatible with PLink™	
IR In/Out	Stereo Mini Jack (M3) x 1 / x 1		Stereo Mini Jack (M3) x 1 / x 1	
Function Slot	x1 (Intel® SDM specification)		x1 (Intel® SDM specification)	
GENERAL				
Power Requirements	220-240 V AC, 50 Hz/60 Hz	220-240 V AC, 50 Hz/60 Hz	220-240 V AC, 50 Hz/60 Hz	220-240 V AC, 50 Hz/60 Hz
Power Consumption	TBD	TBD	TBD	TBD
Power Off Condition	TBD	TBD	TBD	TBD
Stand-by Condition	TBD	TBD	TBD	TBD
Dimensions (W x H x D)	1458 x 836 x 74 mm (57.40" x 32.90" x 2.91")	1240 x 714 x 74 mm (48.82" x 28.09" x 2.91")	1104 x 637 x 73 mm (43.48" x 25.08" x 2.88")	TBD
Carton Size (W x H x D)	TBD	TBD	TBD	TBD
Bezel Width	T:11.7 mm (0.46"), B:15.3 mm (0.60"), L/R:12.2 mm (0.48")	T:12.2 mm (0.48"), B:15.8 mm (0.62"), L/R:12.7 mm (0.50")	T/B:14.2 mm (0.56"), L/R:12.9 mm (0.51")	TBD
Weight	TBD	TBD	TBD	TBD
Gross Weight	TBD	TBD	TBD	TBD
Pitch for Wall-Hanging	VESA compliant 400 x 400 mm (15.8" x 15.8")		VESA compliant 400 x 400 mm (15.8" x 15.8")	
Built-in Speaker	Yes		Yes	
Orientation	Landscape/Portrait*2		Landscape/Portrait*2	
Tilting Angle*3	TBD		TBD	
Operating Environment	Temperature: 0 °C to 40 °C (32 °F to 104 °F)*4 / 0 °C to 35 °C (32 °F to 95 °F)*5, Humidity: 20 % to 80 % (No Condensation)		Temperature: 0 °C to 40 °C (32 °F to 104 °F)*4 / 0 °C to 35 °C (32 °F to 95 °F)*5, Humidity: 20 % to 80 % (No Condensation)	
Storage Environment	Temperature: -20 °C to 60 °C (4 °F to 140 °F), Humidity: 20 % to 80 % (No Condensation)		Temperature: -20 °C to 60 °C (4 °F to 140 °F), Humidity: 20 % to 80 % (No Condensation)	
Operating Time*6	24 h/day		24 h/day	
OPTIONS				
Pedestal	TY-ST55PE9	TY-ST55PE9	TY-ST43PE9	TY-ST43PE9
Wall-Hanging Bracket	TY-WK98PV1	—	—	—
Digital Interface Box	ET-YFB100G	ET-YFB100G	ET-YFB100G	ET-YFB100G
DIGITAL LINK Switcher	ET-YFB200G	ET-YFB200G	ET-YFB200G	ET-YFB200G
Early Warning Software*7	ET-SWA100/105 Series	ET-SWA100/105 Series	ET-SWA100/105 Series	ET-SWA100/105 Series
Auto Display Adjustment Upgrade Kit*8	TY-VUK10	TY-VUK10	TY-VUK10	TY-VUK10

*1: Input: HDCP 2.2 Output: NG / Input: HDCP 1.4 Output: No HDCP

*2: When installing the display vertically, be sure that the power indicator comes to the right side.

*3: Please contact your sales representative with regard to the tilt angle before installation.

*4: For up to 1400 m (4593 ft) altitude.

*5: For between 1400m (4593 ft) to 2800 m (9186 ft) altitude.

*6: In case of long time, the moving image is recommended to be displayed. If you display a still picture for an extended period, the image retention might remain on the screen. However, image retention can gradually disappear by displaying a moving images.

*7: Multi Monitoring & Control Software Ver. 2.1 or later is required. Part number suffix may differ depending on the license type.

*8: Download the latest Video Wall Manager from Global Website in advance. (<https://panasonic.net/cns/prodisplays/download/software/vwm/>)

SF2H/SF1H Series



Standard

Model no.	TH-80SF2H	TH-70SF2H		TH-55SF1H	TH-49SF1H	TH-42SF1H
Screen Size (Diagonal)/Aspect Ratio	80-inch (2032 mm)/16:9	70-inch (1765 mm)/16:9		55-inch (1387 mm)/16:9	49-inch (1232 mm)/16:9	42-inch (1064 mm)/16:9
Panel Type	VA Panel/E-LED	VA Panel/E-LED		IPS Panel/E-LED	IPS Panel/E-LED	IPS Panel/E-LED
Effective Display Area (W x H)	1771 x 996 mm (69.7" x 39.2")	1538 x 865 mm (60.5" x 34.0")		1209 x 680 mm (47.6" x 26.7")	1073 x 604 mm (42.2" x 23.7")	927 x 521 mm (36.5" x 20.5")
Resolution (H x V)	1920 x 1080	1920 x 1080		1920 x 1080	1920 x 1080	1920 x 1080
Brightness (Typ)*	700 cd/m ²	700 cd/m ²		700 cd/m ²	700 cd/m ²	700 cd/m ²
Contrast Ratio	5000:1	5000:1		1300:1	1300:1	1300:1
Dynamic Contrast Ratio	50000:1	50000:1		50000:1	50000:1	50000:1
Response Time	4.0 ms (G to G)	8.0 ms (G to G)		8 ms (G to G)	8 ms (G to G)	8 ms (G to G)
Viewing Angle (Horizontal/Vertical)	176°/176° (CR≥10)	176°/176° (CR≥10)		178°/178° (CR≥10)	178°/178° (CR≥10)	178°/178° (CR≥10)
Panel Surface Treatment	Anti-Glare (Haze 5 %)	Anti-Glare (Haze 12 %)		Anti-Glare (Haze 10 %)	Anti-Glare (Haze 10 %)	Anti-Glare (Haze 10 %)
VIDEO In	4-pole Mini Jack (M3) x 1 (Audio In shared with DVI-D In/PC In/Video In)			BNC x 1 (Shared with Component /RGB Y/G)		
Audio In (L/R)				Stereo Mini Jack (M3) x 1 (Shared with Component In)		
HDMI In	HDMI Type A Connector x 2			HDMI Type A Connector x 2		
Component/RGB In	—			BNC x 1 set (Shared with Video In)		
Audio In (L/R)	—			Stereo Mini Jack (M3) x 1 (Shared with Video In)		
DVI-D In	DVI-D 24-pin x 1 (DVI Revision 1.0 compliant), HDCP 1.1 compatible			DVI-D 24-pin x 1		
Audio In (L/R)	4-pole Mini Jack (M3) x 1 (Shared with PC/VIDEO In)			Stereo Mini Jack (M3) x 1 (Shared with PC In)		
DVI-D Out	DVI-D 24-pin x 1 (DVI Revision 1.0 compliant), HDCP 1.1 compatible			DVI-D 24-pin x 1		
PC In	Mini D-sub 15-pin x 1 (DDC2B compatible)			Mini D-Sub 15-pin x 1 (Female)		
Audio In (L/R)	4-pole Mini Jack (M3) x 1 (Shared with DVI-D/VIDEO In)			Stereo Mini Jack (M3) x 1 (Shared with DVI-D In)		
Audio Out (L/R)	Stereo Mini Jack (M3) x 1			Stereo Mini Jack (M3) x 1		
Serial In/Out	D-sub 9-pin x 1/x 1, RS-232C Compatible			D-sub 9-pin x 1/x 1, RS-232C Compatible		
DIGITAL LINK	RJ45 x 1, 100BASE-TX, Compatible with PLink™ (Shared with LAN)			RJ45 x 1 100BASE-TX, Compatible with PLink™ (Shared with LAN)		
LAN	RJ45 x 1, 100BASE-TX, Compatible with PLink™ (Shared with DIGITAL LINK)			RJ45 x 1 100BASE-TX, Compatible with PLink™ (Shared with DIGITAL LINK)		
IR In/Out	Stereo Mini Jack (M3) x 1 / x 1			Stereo Mini Jack (M3) x 1 / x 1		
USB	USB Type A Connector x 1, DC 5 V/1 A (USB 3.0 is not supported)			USB Type A Connector x 1, DC 5V/1A (USB 3.0 is not supported.)		
Power Requirements	220-240 V AC, 50 Hz/60 Hz			220-240 V AC, 50 Hz/60 Hz		
Power Consumption	380 W			190 W		
Power Off Condition	Approx. 0.3 W			Approx. 0.3 W		
Stand-by Condition	Approx. 0.5 W			Approx. 0.5 W		
Dimensions (W x H x D)	1835 x 1060 x 82 mm (72.3" x 41.8" x 3.3")			1229 x 699 x 72* mm (48.4" x 27.6" x 2.8"*)		
Carton Size (W x H x D)	1970 x 1191 x 351 mm (77.6" x 46.9" x 13.9")			1444 x 922 x 223 mm (56.9" x 36.3" x 8.8")		
Bezel Width	R/L/T/B: 28.5 mm (1.12")			R/L/T/B: 6.3 mm (0.25")		
Weight	Approx. 62.0 kg (135.0 lbs.)			Approx. 24.9 kg (54.9 lbs.)		
Gross Weight	Approx. 73.0 kg (159.0 lbs.)			Approx. 33.0 kg (72.8 lbs.)		
Pitch for Wall-Hanging	VESA compliant 600 x 400 mm (23.6" x 15.8")			VESA Compliant 400 x 400 mm (15.8" x 15.8")		
Built-in Speakers	20 W [10 W + 10 W]			20 W [10 W + 10 W]		
Orientation	Landscape/Portrait (Angle adjustment 0-45 degrees for both left and right: landscape setting only)			Landscape/Portrait (Angle adjustment 0-45 degrees for both left and right)		
Tilting Angle	0-20 degrees forward/backward with landscape/portrait setting (Angle adjustment is not possible for forward/backward tilting installation.)			0-45 degrees forward/backward with landscape/portrait setting*1 (Angle adjustment is not possible for forward/backward tilting installation.)		
Operating Environment	Temperature: 0 °C to 40 °C (32 °F to 104 °F)*2 : 0 °C to 35 °C (32 °F to 95 °F)*3 / Humidity: 20 % to 80 % (Non-condensation)			Temperature: 0 °C to 40 °C (32 °F to 104 °F)*2 : 0 °C to 35 °C (32 °F to 95 °F)*3 / Humidity: 20 % to 80 % (Non-condensation)		
Storage Environment	Temperature: -20 °C to 60 °C (-4 °F to 140 °F) / Humidity: 20 % to 80 % (Non-condensation)			Temperature: -20 °C to 60 °C (-4 °F to 140 °F) / Humidity: 20 % to 80 % (Non-condensation)		
Operating Time*4	24 h/day			24 h/day		
Pedestal	TY-ST75PE9			TY-ST43PE8		
Digital Interface Box	ET-YFB100G			ET-YFB100G		
DIGITAL LINK Switcher	ET-YFB200G			ET-YFB200G		
Early Warning Software*5	ET-SWA100 Series			ET-SWA100 Series		
Auto Display Adjustment Upgrade Kit*6	TY-VUK10			TY-VUK10		
Multi Window Processor*7	ET-MWP100G			ET-MWP100G		

*1: Please contact your sales representative with regard to the tilt angle before installation. *2: For up to 1400 m (4593 ft) altitude.

*3: For between 1400 m (4593 ft) and 2800 m (9186 ft) altitude.

*4: In case of long time, the moving image is recommended to be displayed. If you display a still picture for an extended period, the image retention might remain on the screen. However, image retention can gradually disappear by displaying a moving images.

*5: Multi Monitoring & Control Software Ver2.0 or later is required. Suffix of the part number may differ depending on the license type.

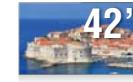
*6: Download the latest Video Wall Manager from Global Website in advance. (<https://panasonic.net/cns/prodisplays/download/software/vwm/>)

*7: The availability varies depending on the country.

+ The brightness of the display panel is equivalent to about 75% its full capacity, when the Light ID is transmitted. The displayed image may flicker, but this is due to a change in the brightness during Light ID transmission and not due to trouble.

★ The handle part excluded, the thickness is 57 mm (2.3").

LF80 Series



Model no.	TH-55LF80	TH-49LF80	TH-42LF80
Screen Size (Diagonal)/Aspect Ratio	55-inch (1387 mm)/16:9	49-inch (1232 mm)/16:9	42-inch (1064 mm)/16:9
Panel Type	IPS Panel/E-LED	IPS Panel/E-LED	IPS Panel/E-LED
Effective Display Area (W x H)	1209 x 680 mm (47.6" x 26.7")	1073 x 604 mm (42.2" x 23.7")	927 x 521 mm (36.5" x 20.5")
Resolution (H x V)	1920 x 1080	1920 x 1080	1920 x 1080
Brightness (Typ)	700 cd/m ²	700 cd/m ²	700 cd/m ²
Contrast Ratio	1300:1	1300:1	1300:1
Dynamic Contrast Ratio	50000:1	50000:1	50000:1
Response Time	8 ms (G to G)	8 ms (G to G)	8 ms (G to G)
Viewing Angle (Horizontal/Vertical)	178°/178° (CR≥10)	178°/178° (CR≥10)	178°/178° (CR≥10)
Panel Surface Treatment	Anti-Glare (Haze 10 %)	Anti-Glare (Haze 10 %)	Anti-Glare (Haze 10 %)
VIDEO In	BNC x 1 (Shared with Component /RGB Y/G)		BNC x 1 (Shared with Component /RGB Y/G)
Audio In (L/R)	Stereo Mini Jack (M3) x 1 (Shared with Component In)		Stereo Mini Jack (M3) x 1 (Shared with Component In)
HDMI In	HDMI Type A Connector x 2		HDMI Type A Connector x 2
Component/RGB In	BNC x 1 set (Shared with Video In)		BNC x 1 set (Shared with Video In)
Audio In (L/R)	Stereo Mini Jack (M3) x 1 (Shared with Video In)		Stereo Mini Jack (M3) x 1 (Shared with Video In)
DVI-D In	DVI-D 24-pin x 1		DVI-D 24-pin x 1
Audio In (L/R)	Stereo Mini Jack (M3) x 1 (Shared with PC In)		Stereo Mini Jack (M3) x 1 (Shared with PC In)
DVI-D Out	DVI-D 24-pin x 1		DVI-D 24-pin x 1
PC In	Mini D-Sub 15-pin x 1 (Female)		Mini D-Sub 15-pin x 1 (Female)
Audio In (L/R)	Stereo Mini Jack (M3) x 1 (Shared with DVI-D In)		Stereo Mini Jack (M3) x 1 (Shared with DVI-D In)
Audio Out (L/R)	Stereo Mini Jack (M3) x 1		Stereo Mini Jack (M3) x 1
Serial In/Out	D-sub 9-pin x 1/x 1, RS-232C Compatible		D-sub 9-pin x 1/x 1, RS-232C Compatible
DIGITAL LINK	RJ45 x 1 100BASE-TX, Compatible with PLink™ (Shared with LAN)		RJ45 x 1 100BASE-TX, Compatible with PLink™ (Shared with LAN)
LAN	RJ45 x 1 100BASE-TX, Compatible with PLink™ (Shared with DIGITAL LINK)		RJ45 x 1 100BASE-TX, Compatible with PLink™ (Shared with DIGITAL LINK)
IR In/Out	Stereo Mini Jack (M3) x 1 / x 1		Stereo Mini Jack (M3) x 1 / x 1
USB	USB Type A Connector x 1, DC 5V/1A (USB 3.0 is not supported.)		USB Type A Connector x 1, DC 5V/1A (USB 3.0 is not supported.)
Power Requirements	220-240 V AC, 50 Hz/60 Hz	220-240 V AC, 50 Hz/60 Hz	220-240 V AC, 50 Hz/60 Hz
Power Consumption	190 W	175 W	155 W
Power Off Condition	Approx. 0.3 W	Approx. 0.3 W	Approx. 0.3 W
Stand-by Condition	Approx. 0.5 W	Approx. 0.5 W	Approx. 0.5 W
Dimensions (W x H x D)	1229 x 699 x 72*mm (48.4" x 27.6" x 2.8"*)	1093 x 623 x 72*mm (43.1" x 24.6" x 2.8"*)	947 x 541 x 72*mm (37.3" x 21.3" x 2.8"*)
Carton Size (W x H x D)	1444 x 922 x 223 mm (56.9" x 36.3" x 8.8")	1308 x 846 x 203 mm (51.5" x 33.4" x 8.0")	1123 x 743 x 203 mm (44.3" x 29.3" x 8.0")
Bezel Width	6.3 mm (0.25")	6.3 mm (0.25")	6.3 mm (0.25")
Weight	Approx. 24.7 kg (54.5 lbs.)	Approx. 19.0 kg (41.9 lbs.)	Approx. 15.3 kg (33.7 lbs.)
Gross Weight	Approx. 32.0 kg (70.6 lbs.)	Approx. 26.0 kg (57.4 lbs.)	Approx. 20.0 kg (44.1 lbs.)
Pitch for Wall-Hanging	VESA Compliant 400 x 400 mm (15.8" x 15.8")	VESA Compliant 400 x 400 mm (15.8" x 15.8")	VESA compliant 200 x 200 mm (7.9" x 7.9")
Built-in Speakers	20 W [10 W + 10 W]	20 W [10 W + 10 W]	20 W [10 W + 10 W]
Orientation	Landscape/Portrait (Angle adjustment 0-45 degrees for both left and right)		Landscape/Portrait (Angle adjustment 0-45 degrees for both left and right)
Tilting Angle	0-45 degrees forward/backward with landscape/portrait setting*1 (Angle adjustment is not possible for forward/backward tilting installation.)		0-45 degrees forward/backward with landscape/portrait setting*1 (Angle adjustment is not possible for forward/backward tilting installation.)
Operating Environment	Temperature: 0 °C to 40 °C (32°F to 104°F)*3 : 0 °C to 35 °C (32 °F to 95 °F)*4 / Humidity: 20 % to 80 % (Non-condensation)		Temperature: 0 °C to 40 °C (32°F to 104°F)*3 : 0 °C to 35 °C (32 °F to 95 °F)*4 / Humidity: 20 % to 80 % (Non-condensation)
Storage Environment	Temperature: -20 °C to 60 °C (-4 °F to 140 °F) / Humidity: 20 % to 80 % (Non-condensation)		Temperature: -20 °C to 60 °C (-4 °F to 140 °F) / Humidity: 20 % to 80 % (Non-condensation)
Operating Time*5	24 h/day		24 h/day
Pedestal	TY-ST43PE8	TY-ST43PE8	TY-ST43PE8
Digital Interface Box	ET-YFB100G	ET-YFB100G	ET-YFB100G
DIGITAL LINK Switcher	ET-YFB200G	ET-YFB200G	ET-YFB200G
Early Warning Software*6	ET-SWA100 Series	ET-SWA100 Series	ET-SWA100 Series
Auto Display Adjustment Upgrade Kit*7	TY-VUK10	TY-VUK10	TY-VUK10
Multi Window Processor*8	ET-MWP100G	ET-MWP100G	ET-MWP100G

*1: Please contact your sales representative with regard to the tilt angle before installation.

*2: If the temperature is 40 °C to 60 °C (104 °F to 140 °F), please keep in humidity 20 % to 40 %. *3: For up to 1400 m (4593 ft) altitude.

*4: For between 1400 m (4593 ft) and 2800 m (9186 ft) altitude.

*5: In case of long time, the moving image is recommended to be displayed. If you display a still picture for an extended period, the image retention might remain on the screen. However, image retention can gradually disappear by displaying a moving images.

*6: Multi Monitoring & Control Software Ver2.0 or later is required. Suffix of the part number may differ depending on the license type.

*7: Download the latest Video Wall Manager from Global Website in advance. (<https://panasonic.net/cns/prodisplays/download/software/vwm/>)

*8: The availability varies depending on the country.

★ The handle part excluded, the thickness is 57 mm (2.3").

SF2 Series



Model no.	TH-65SF2	TH-55SF2		TH-49SF2	TH-43SF2
Screen Size (Diagonal)/Aspect Ratio	65-inch (1639 mm)/16:9	55-inch (1387 mm)/16:9		49-inch (1232 mm)/16:9	43-inch (1079 mm)/16:9
Panel Type	IPS Panel/E-LED	IPS Panel/E-LED		IPS Panel/E-LED	IPS Panel/E-LED
Effective Display Area (W x H)	1428 x 803 mm (52.6" x 31.6")	1209 x 680 mm (47.6" x 26.7")		1073 x 604 mm (42.2" x 23.7")	941 x 529 mm (37.0" x 20.8")
Resolution (H x V)	1920 x 1080	1920 x 1080		1920 x 1080	1920 x 1080
Brightness (Typ)	450 cd/m ²	450 cd/m ²		450 cd/m ²	450 cd/m ²
Contrast Ratio	1300:1	1100:1		1100:1	1100:1
Dynamic Contrast Ratio	50000:1	50000:1		50000:1	50000:1
Response Time	10 ms (G to G)	12 ms (G to G)		12 ms (G to G)	12 ms (G to G)
Viewing Angle (Horizontal/Vertical)	178°/178° (CR≥10)	178°/178° (CR≥10)		178°/178° (CR≥10)	178°/178° (CR≥10)
Panel Surface Treatment	Anti-Glare (Haze 1 %)	Anti-Glare (Haze 1 %)		Anti-Glare (Haze 1 %)	Anti-Glare (Haze 1 %)
VIDEO In/Audio In	4-pole Mini Jack (M3) x 1			4-pole Mini Jack (M3) x 1	
HDMI In	HDMI Type A Connector x 2			HDMI Type A Connector x 2	
Component/RGB In	—			—	
Audio In (L/R)	—			—	
DVI-D In	DVI-D 24-pin x 1 (DVI Revision 1.0 compliant), HDCP 1.1 compatible			DVI-D 24-pin x 1 (DVI Revision 1.0 compliant), HDCP 1.1 compatible	
Audio In (L/R)	4-pole Mini Jack (M3) x 1 (Shared with PC/VIDEO In)			4-pole Mini Jack (M3) x 1 (Shared with PC/AV In)	
DVI-D Out	DVI-D 24-pin x 1 (DVI Revision 1.0 compliant), HDCP 1.1 compatible			DVI-D 24-pin x 1 (DVI Revision 1.0 compliant), HDCP 1.1 compatible	
PC In	Mini D-Sub 15-pin x1 (DDC2B compatible)			Mini D-Sub 15-pin x 1 (DDC2B compatible)	
Audio In (L/R)	4-pole Mini Jack (M3) x 1 (Shared with DVI-D/VIDEO In)			4-pole Mini Jack (M3) x 1 (Shared with DVI-D/AV In)	
Audio Out (L/R)	Stereo Mini Jack (M3) x 1			Stereo Mini Jack (M3) x 1	
Serial In/Out	D-sub 9-pin x 1/x 1, RS-232C Compatible			D-sub 9-pin x 1/x 1, RS-232C Compatible	
DIGITAL LINK	RJ45 x 1, 100BASE-TX, Compatible with PLink™ for TH-65SF2E/W and TH-55SF2W (Shared with LAN)			RJ45 x 1, 100BASE-TX, Compatible with PLink™ for TH-49/43SF2W (Shared with LAN)	
LAN	RJ45 x 1, 100BASE-TX, Compatible with PLink™ for TH-65SF2E/W and TH-55SF2W (Shared with DIGITAL LINK)			RJ45 x 1, 100BASE-TX, Compatible with PLink™ for TH-49/43SF2W (Shared with DIGITAL LINK); 10BASE-T/100BASE-TX, Compatible with PLink™ for TH-49/43SF2E	
IR In/Out	Stereo Mini Jack (M3) x 1/ x 1			Stereo Mini Jack (M3) x 1/ x 1	
USB	USB TYPE A Connector x 1, DC 5V/1A (USB 3.0 is not supported)			USB TYPE A Connector x 1, DC 5V/1A (USB 3.0 is not supported)	
Power Requirements	220-240 V AC, 50 Hz/60 Hz	220-240 V AC, 50 Hz/60 Hz		220-240 V AC, 50 Hz/60 Hz	220-240 V AC, 50 Hz/60 Hz
Power Consumption	155 W	115 W		110 W	95 W
Power Off Condition	Approx. 0.3 W	Approx. 0.3 W		Approx. 0.3 W	Approx. 0.3 W
Stand-by Condition	Approx. 0.5 W	Approx. 0.5 W		Approx. 0.5 W	Approx. 0.5 W
Dimensions (W x H x D)	1452 x 834 x 64 mm (57.2" x 32.9" x 2.5")	1234 x 710 x 46 mm (48.5" x 28.0" x 1.8")		1098 x 634 x 46 mm (43.2" x 24.9" x 1.8")	965 x 559 x 46 mm (38.0" x 22.0" x 1.8")
Carton Size (W x H x D)	1648 x 1076 x 280 mm (64.9" x 42.4" x 11.1")	1448 x 952 x 223 mm (57.0" x 37.5" x 8.8")		1292 x 883 x 203 mm (50.9" x 34.8" x 8.0")	1141 x 779 x 203 mm (44.9" x 30.7" x 8.0")
Bezel Width	T/R/L: 9.5 mm (0.38"), B: 15.7 mm (0.62")	T/R/L: 9.5 mm (0.38"), B: 15.5mm (0.61")		T/R/L: 9.5 mm (0.38"), B: 15.5 mm (0.61")	T/R/L: 9.5 mm (0.38"), B: 15.5 mm (0.61")
Weight	Approx. 29.8 kg (65.7 lbs.)	Approx. 18.0 kg (39.7 lbs.)		Approx. 14.7 kg (32.4 lbs.)	Approx. 10.7 kg (23.6 lbs.)
Gross Weight	Approx. 41.0 kg (90.4 lbs.)	Approx. 26.0 kg (57.3 lbs.)		Approx. 21.0 kg (46.3 lbs.)	Approx. 15.0 kg (33.1 lbs.)
Pitch for Wall-Hanging	VESA Compliant 400 x 400 mm (15.8" x 15.8")	VESA Compliant 400 x 400 mm (15.8" x 15.8")		VESA Compliant 400 x 400 mm (15.8" x 15.8")	VESA compliant 400 x 400 mm (15.8" x 15.8")
Built-in Speakers	20W [10 W + 10 W]	20 W [10 W + 10 W]		20 W [10 W + 10 W]	20 W [10 W + 10 W]
Orientation*1	Landscape/Portrait (Angle adjustment 0 - 45 degrees for both left and right with landscape setting. When installing the portrait setting, be sure that the Power Indicator comes to the upside.)			Landscape/Portrait (Angle adjustment 0 - 45 degrees for both left and right with landscape setting. When installing the portrait setting, be sure that the Power Indicator comes to the upside.)	
Tilting Angle*1	Landscape setting: 0 - 45 degrees forward/backward Portrait setting: 0 - 45 degrees forward/backward			Landscape setting: 0 - 45 degrees forward/backward Portrait setting: 0 - 45 degrees forward/backward	
Operating Environment	Temperature: 0 °C to 40 °C (32°F to 104°F) / Humidity: 20 % to 80 % (Non Condensation)			Temperature: 0 °C to 40 °C (32°F to 104°F)*3 : 0 °C to 35 °C (32 °F to 95 °F)*4 / Humidity: 20 % to 80 % (Non-condensation)	
Storage Environment	Temperature: -20 °C to 60 °C (-4 °F to 140 °F)*2 / Humidity: 20 % to 80 % (Non Condensation)			Temperature: -20 °C to 60 °C (-4 °F to 140 °F) / Humidity: 20 % to 80 % (Non-condensation)	
Operating Time*5	24 h/day			24 h/day	
Pedestal	TY-ST55PE9	TY-ST55PE9		TY-ST43PE9	TY-ST43PE9
Digital Interface Box	ET-YFB100G	ET-YFB100G*6		ET-YFB100G*6	ET-YFB100G*6
DIGITAL LINK Switcher	ET-YFB200G	ET-YFB200G*6		ET-YFB200G*6	ET-YFB200G*6
Early Warning Software*7	ET-SWA100 Series	ET-SWA100 Series		ET-SWA100 Series	ET-SWA100 Series
Auto Display Adjustment Upgrade Kit*8	TY-VUK10	TY-VUK10		TY-VUK10	TY-VUK10

*1: Please contact your sales representative with regard to the tilt angle before installation. Note that a gap of 0.5 mm or more is required when installing multiple displays.

*2: If the temperature is 40 °C to 60 °C (104 °F to 140 °F), please keep in humidity 20 % to 40 % . *3: For up to 1400 m (4593 ft) altitude.

*4: For between 1400 m (4593 ft) and 2800 m (9186 ft) altitude.

*5: In case of long time, the moving image is recommended to be displayed. If you display a still picture for an extended period, the image retention might remain on the screen. However, image retention can gradually disappear by displaying a moving images.

*6: SF2W Series only. *7: Multi Monitoring & Control Software Ver2.0 or later is required. Suffix of the part number may differ depending on the license type.

*8: Download the latest Video Wall Manager from Global Website in advance. (<https://panasonic.net/cns/prodisplays/download/software/vwm/>)

AF1 Series



Model no.		TH-55AF1	TH-49AF1	TH-42AF1
DISPLAY PANEL	Screen Size (Diagonal)/Aspect Ratio	55-inch (1387 mm)/16:9	49-inch (1232 mm)/16:9	42-inch (1064 mm)/16:9
	Panel Type	IPS Panel/E-LED	IPS Panel/E-LED	IPS Panel/E-LED
	Effective Display Area (W x H)	1209 x 680 mm (47.6" x 26.7")	1073 x 604 mm (42.2" x 23.7")	927 x 521 mm (36.5" x 20.5")
	Resolution (H x V)	1920 x 1080	1920 x 1080	1920 x 1080
	Brightness (Typ)	500 cd/m ²	500 cd/m ²	500 cd/m ²
	Contrast Ratio	1300:1	1300:1	1300:1
	Dynamic Contrast Ratio	50000:1	50000:1	50000:1
	Response Time	8 ms (G to G)	8 ms (G to G)	8 ms (G to G)
	Viewing Angle (Horizontal/Vertical)	178°/178° (CR≥10)	178°/178° (CR≥10)	178°/178° (CR≥10)
	Panel Surface Treatment	Anti-Glare (Haze 10 %)	Anti-Glare (Haze 10 %)	Anti-Glare (Haze 10 %)
PLATFORM	OS	Android 4.4.3		Android 4.4.3
	CPU	Cortex-A9, 1.0 GHz (Quad)		Cortex-A9, 1.0 GHz (Quad)
	Memory	RAM 1 GB / ROM 8 GB		RAM 1 GB / ROM 8 GB
TERMINAL	VIDEO In	BNC x 1 (Shared with Component In)		BNC x 1 (Shared with Component In)
	Audio In (L/R)	Stereo Mini Jack (M3) x 1 (Shared with Component In)		Stereo Mini Jack (M3) x 1 (Shared with Component In)
	HDMI In	HDMI Type A Connector x 2		HDMI Type A Connector x 2
	Component/RGB In	BNC x 1 set (Shared with VIDEO In)		BNC x 1 set (Shared with VIDEO In)
	Audio In (L/R)	Stereo Mini Jack (M3) x 1 (Shared with Video In)		Stereo Mini Jack (M3) x 1 (Shared with Video In)
	DVI-D In	DVI-D 24-pin x 1		DVI-D 24-pin x 1
	Audio In (L/R)	Stereo Mini Jack (M3) x 1 (Shared with PC In)		Stereo Mini Jack (M3) x 1 (Shared with PC In)
	DVI-D Out	DVI-D 24-pin x 1		DVI-D 24-pin x 1
	PC In	Mini D-Sub 15-pin x1 (Female)		Mini D-Sub 15-pin x1 (Female)
	Audio In (L/R)	Stereo Mini Jack (M3) x 1 (Shared with DVI-D In)		Stereo Mini Jack (M3) x 1 (Shared with DVI-D In)
	Audio Out (L/R)	Stereo Mini Jack (M3) x 1		Stereo Mini Jack (M3) x 1
	Serial In/Out	D-sub 9-pin x 1/x 1, RS-232C Compatible		D-sub 9-pin x 1/x 1, RS-232C Compatible
	USB	USB Connector (TYPE A) x 1, DC 5 V/1 A (USB3.0 is not supported)		USB Connector (TYPE A) x 1, DC 5 V/1 A (USB3.0 is not supported)
	IR In/Out	Stereo Mini Jack (M3) x 1 / x 1		Stereo Mini Jack (M3) x 1 / x 1
OpenPort PLATFORM	LAN	RJ45 x 1 for Network Connection, 10BASE-T/100BASE-TX/1000BASE-T, Compatible with PoE Link™		RJ45 x 1 for Network Connection, 10BASE-T/100BASE-TX/1000BASE-T, Compatible with PoE Link™
	USB	USB2.0 Connector (TYPE A) x 3, DC 5 V/500 mA		USB2.0 Connector (TYPE A) x 3, DC 5 V/500 mA
	Micro-USB	Micro USB Connector x 1		Micro USB Connector x 1
	microSD card slot	microSD, microSDHC x 1		microSD, microSDHC x 1
	Wireless LAN	IEEE 802.11a/b/g/n		IEEE 802.11a/b/g/n
GENERAL	Power Requirements	220-240 V AC, 50 Hz/60 Hz		220-240 V AC, 50 Hz/60 Hz
	Power Consumption	190 W		175 W
	Power Off Condition	Approx. 0.3 W		Approx. 0.3 W
	Stand-by Condition	Approx. 0.5 W (When [OpenPort PLATFORM standby] is set to [Off]) Approx. 20 W (When [OpenPort PLATFORM standby] is set to [On])		Approx. 0.5 W (When [OpenPort PLATFORM standby] is set to [Off]) Approx. 20 W (When [OpenPort PLATFORM standby] is set to [On])
	Dimensions (W x H x D)	1229 x 699 x 72* mm (48.4" x 27.6" x 2.8"*)	1093 x 623 x 72* mm (43.1" x 24.6" x 2.8"*)	947 x 541 x 72* mm (37.3" x 21.3" x 2.8"*)
	Carton Size (W x H x D)	1444 x 922 x 223 mm (56.9" x 36.3" x 8.8")	1308 x 846 x 203 mm (51.5" x 33.4" x 8.0")	1123 x 743 x 203 mm (44.3" x 29.3" x 8.0")
	Bezel Width	6.3 mm (0.25")		6.3 mm (0.25")
	Weight	Approx. 25.0 kg (55.2 lbs.)		Approx. 15.6 kg (34.4 lbs.)
	Gross Weight	Approx. 33.0 kg (72.8 lbs.)		Approx. 21.0 kg (46.3 lbs.)
	Pitch for Wall-Hanging	VESA Compliant 400x 400 mm (15.8" x 15.8")		VESA Compliant 200 x 200 mm (7.9" x 7.9")
	Built-in Speakers	20 W [10 W + 10 W]		20 W [10 W + 10 W]
	Orientation	Landscape/Portrait (Angle adjustment 0-45 degrees for both left and right)		Landscape/Portrait (Angle adjustment 0-45 degrees for both left and right)
	Tilting Angle*1	0-45 degrees forward/backward with landscape/portrait setting*1 (Angle adjustment is not possible for forward/backward tilting installation.)		0-45 degrees forward/backward with landscape/portrait setting*1 (Angle adjustment is not possible for forward/backward tilting installation.)
	Operating Environment	Temperature: 0 °C to 40 °C (32 °F to 104 °F)*2 : 0 °C to 35 °C (32 °F to 95 °F)*3 / Humidity: 20 % to 80 % (Non-condensation)		Temperature: 0 °C to 40 °C (32 °F to 104 °F)*2 : 0 °C to 35 °C (32 °F to 95 °F)*3 / Humidity: 20 % to 80 % (Non-condensation)
	Storage Environment	Temperature: -20 °C to 60 °C (-4 °F to 140 °F) / Humidity: 20 % to 80 % (Non Condensation)		Temperature: -20 °C to 60 °C (-4 °F to 140 °F) / Humidity: 20 % to 80 % (Non Condensation)
	Operating Time*4	24 h/day		24 h/day
OPTIONS	Pedestal	TY-ST43PE8		TY-ST43PE8
	Early Warning Software*5	ET-SWA100 Series		ET-SWA100 Series
	Auto Display Adjustment Upgrade Kit*6	TY-VUK10		TY-VUK10

*1: Please contact your sales representative with regard to the tilt angle before installation. *2: For up to 1400 m (4593 ft) altitude. *3: For between 1400 m (4593 ft) and 2800 m (9186 ft) altitude. *4: In case of long time, the moving image is recommended to be displayed. If you display a still picture for an extended period, the image retention might remain on the screen. However, image retention can gradually disappear by displaying a moving images. *5: Multi Monitoring & Control Software Ver2.0 or later is required. Suffix of the part number may differ depending on the license type. *6: Download the latest Video Wall Manager from Global Website in advance. (<https://panasonic.net/cns/prodisplays/download/software/vwm/>)

* The handle part excluded, the thickness is 57 mm (2.3").

Feature video



AF1 Series: Pro Signage Display Featuring Android -based OpenPort PLATFORM

AF1 Partners

OpenPort PLATFORM® supports applications developed and mutually checked with Panasonic by the following global partners.



* Listed in alphabetical order.

EQ1 Series



Entry

Model no.	TH-86EQ1	TH-75EQ1		TH-65EQ1	TH-55EQ1
DISPLAY PANEL					
Screen Size (Diagonal)/Aspect Ratio	86-inch (2174 mm) /16:9	75-inch (1892 mm) /16:9		65-inch (1639 mm) /16:9	55-inch (1387 mm) /16:9
Panel Type	IPS/Edge LED	VA/Edge LED		VA/Direct LED	VA/Direct LED
Effective Display Area (W x H)	1895 x 1065 mm (74.6" x 41.9")	1649 x 927 mm (64.9" x 36.5")		1428 x 803 mm (56.2" x 31.6")	1209 x 680 mm (47.6" x 26.7")
Resolution (H x V)	3840 x 2160	3840 x 2160		3840 x 2160	3840 x 2160
Brightness (Typ)	350 cd/m ²	350 cd/m ²		350 cd/m ²	350 cd/m ²
Contrast Ratio	1200:1	1200:1		4000:1	4000:1
Dynamic Contrast Ratio	50000:1	50000:1		50000:1	50000:1
Response Time	8 ms (G to G)	8 ms (G to G)		8 ms (G to G)	8 ms (G to G)
Viewing Angle (Horizontal/Vertical)	178°/178° (CR≥10)	178°/178° (CR≥10)		178°/178° (CR≥10)	178°/178° (CR≥10)
Panel Surface Treatment	Anti-Glare (Haze 28 %)	Anti-Glare (Haze 28 %)		Anti-Glare (Haze 2 %)	Anti-Glare (Haze 2 %)
TERMINAL					
HDMI In	HDMI TYPE-A Connector x 2 (HDCP2.2 supported)			HDMI TYPE-A Connector x 2 (HDCP2.2 supported)	
VIDEO/AV In	4-pole Mini Jack (M3) x 1 (Audio: Stereo Mini Jack (M3) x 1(Shared with DVI-D/PC In))			4-pole Mini Jack (M3) x 1 (Audio: Stereo Mini Jack (M3) x 1(Shared with DVI-D/PC In))	
DVI-D In	DVI-D 24-pin x 1, DVI Revision 1.0 Compatible (HDCP 1.1 supported)			DVI-D 24-pin x 1, DVI Revision 1.0 Compatible (HDCP 1.1 supported)	
Audio In (L/R)	Stereo Mini Jack (M3) x 1 (Shared with AV/PC In)			Stereo Mini Jack (M3) x 1 (Shared with AV/PC In)	
PC In	Mini D-sub 15-pin x 1 (Compatible with DDC 2B)			Mini D-sub 15-pin x 1 (Compatible with DDC 2B)	
Audio In (L/R)	Stereo Mini Jack (M3) x 1 (Shared with AV/DVI-D In)			Stereo Mini Jack (M3) x 1 (Shared with AV/DVI-D In)	
USB	USB Connector (TYPE A) x 1, DC 5 V/2 A (USB 3.0 supported)			USB Connector (TYPE A) x 1, DC 5 V/2 A (USB 3.0 supported)	
Serial In	D-sub 9-pin x 1, RS-232C Compatible			D-sub 9-pin x 1, RS-232C Compatible	
DIGITAL LINK	—			—	
LAN	RJ45 x 1, 10BASE-T/100BASE-TX/1000BASE-T, Compatible with PLink™			RJ45 x 1, 10BASE-T/100BASE-TX/1000BASE-T, Compatible with PLink™	
IR In/Out	Stereo Mini Jack (M3) x 1 / x 1			Stereo Mini Jack (M3) x 1 / x 1	
Audio Out	Stereo Mini Jack (M3) x 1 / Variable Output (-∞ - 0 dB) (at 1 kHz 0 dB Input, 10 kΩ Loaded)			Stereo Mini Jack (M3) x 1 / Variable Output (-∞ - 0 dB) (at 1 kHz 0 dB Input, 10 kΩ Loaded)	
GENERAL					
Power Requirements	220-240 V AC, 50 Hz/60 Hz	220-240 V AC, 50 Hz/60 Hz		220-240 V AC, 50 Hz/60 Hz	220-240 V AC, 50 Hz/60 Hz
Power Consumption	363 W	296 W		185 W	195 W
Power Off Condition	Approx. 0.3 W	Approx. 0.3 W		Approx. 0.3 W	Approx. 0.3 W
Stand-by Condition	Approx. 0.5 W	Approx. 0.5 W		Approx. 0.5 W	Approx. 0.5 W
Dimensions (W x H x D)	1928 x 1099 x 86 mm (76.0" x 43.3" x 3.4")	1681 x 959 x 73 mm (66.2" x 37.8" x 2.9")		1459 x 835 x 82 mm (57.5" x 32.9" x 3.3")	1240 x 712 x 62 mm (48.9" x 28.1" x 2.5")
Carton Size (W x H x D)	2224 x 1427 x 373 mm (87.6" x 56.2" x 14.7")	1832 x 1283 x 280 mm (72.2" x 50.6" x 11.1")		1655 x 1078 x 280 mm (65.2" x 42.5" x 11.1")	1365 x 864 x 185 mm (53.8" x 34.1" x 7.3")
Bezel Width	15.2 mm (0.6") (T/B/L/R)	14.8 mm (0.6") (T/B/L/R)		3.5 mm (0.6") (T/R/L), 14.5 mm (0.6") (B)	12.9 mm (0.6") (T/R/L), 14.7 mm (0.6") (B)
Weight	Approx. 66.0 kg (145.5 lbs.)	Approx. 56.0 kg (123.5 lbs.)		Approx. 27.0 kg (59.6 lbs.)	Approx. 17.0 kg (37.5 lbs.)
Gross Weight	Approx. 89.0 kg (196.3 lbs.)	Approx. 71.0 kg (156.6 lbs.)		Approx. 38.0 kg (83.8 lbs.)	Approx. 23.0 kg (50.7 lbs.)
Pitch for Wall-Hanging	600 x 400 mm (23.6" x 15.8") VESA Compliant			400 x 400 mm (15.8" x 15.8") VESA Compliant	400 x 200 mm (15.8" x 7.9") VESA Compliant
Built-in Speaker	20 W [10 W + 10 W]			20 W [10 W + 10 W]	
Orientation*1	Landscape/Portrait			Landscape/Portrait	
Tilting Angle*2	0-20 degrees forward/backward with landscape/portrait setting			0-20 degrees forward/backward with landscape/portrait setting	
Operating Environment	Temperature: 0 °C to 40 °C (32 °F to 104 °F) / for up to 1400 m (4593 ft) altitude, 0 °C to 35 °C (32 °F to 95 °F) / Altitude 1400-2800 m [4593 ft to 9186 ft] / Humidity: 20 % - 80 % (No condensation)			Temperature: 0 °C to 40 °C (32 °F to 104 °F) / for up to 1400 m (4593 ft) altitude, 0 °C to 35 °C (32 °F to 95 °F) / Altitude 1400-2800 m [4593 ft to 9186 ft] / Humidity: 20 % to 80 % (No condensation)	
Storage Environment	Temperature: -20 °C to 60 °C (-4 °F to 140 °F) / Humidity: 20 % to 80 % (Non condensation)			Temperature: -20 °C to 60 °C (-4 °F to 140 °F) / Humidity: 20 % to 80 % (Non condensation)	
Operating Time*3	24 h/day			18 h/day	
OPTIONS					
Pedestal	—	TY-ST75PE9		TY-ST55PE9	TY-ST43PE8
Wall-hanging Bracket	TY-WK98PV1	TY-WK98PV1		TY-WK98PV1	—
Early Warning Software*4	ET-SWA100 Series	ET-SWA100 Series		ET-SWA100 Series	ET-SWA100 Series

*1: When mounting portrait setting, be sure to mount with the main unit's power lamp facing downward.

*2: Please contact your sales representative with regard to the tilt angle before installation.

*3: In case of long time, the moving image is recommended to be displayed. If you display a still picture for an extended period, the image retention might remain on the screen. However, image retention can gradually disappear by displaying a moving images.

*4: Multi Monitoring & Control Software Ver.2.0 or later is required. Suffix of the part number may differ depending on the licence type.

*5: Download the latest Video Wall Manager from Global Website in advance. ([https:// panasonic.net/cns/prodisplays/download/software/vwm/](https://panasonic.net/cns/prodisplays/download/software/vwm/))



Model no.		TH-50EQ1	TH-43EQ1
DISPLAY PANEL	Screen Size (Diagonal)/Aspect Ratio	50-inch (1257 mm) /16:9	43-inch (1079 mm) /16:9
	Panel Type	VA/Direct LED	VA/Direct LED
	Effective Display Area (W x H)	1095 x 616 mm (43.1" x 24.2")	941 x 529 mm (37.0" x 20.8")
	Resolution (H x V)	3840 x 2160	3840 x 2160
	Brightness (Typ)	350 cd/m ²	350 cd/m ²
	Contrast Ratio	4000:1	4000:1
	Dynamic Contrast Ratio	50000:1	50000:1
	Response Time	8 ms (G to G)	8 ms (G to G)
	Viewing Angle (Horizontal/Vertical)	178°/178° (CR≥10)	178°/178° (CR≥10)
	Panel Surface Treatment	Anti-Glare (Haze 2 %)	Anti-Glare (Haze 2 %)
TERMINAL	HDMI In	HDMI TYPE-A Connector x 2 (HDCP2.2 supported)	
	VIDEO/AV In	4-pole Mini Jack (M3) x 1 (Audio: Stereo Mini Jack (M3) x 1(Shared with DVI-D/PC In))	
	DVI-D In	DVI-D 24-pin x 1, DVI Revision 1.0 Compatible (HDCP 1.1 supported)	
	Audio In (L/R)	Stereo Mini Jack (M3) x 1 (Shared with AV/PC In)	
	PC In	Mini D-sub 15-pin x 1 (Compatible with DDC 2B)	
	Audio In (L/R)	Stereo Mini Jack (M3) x 1 (Shared with AV/DVI-D In)	
	USB	USB Connector (TYPE A) x 1, DC 5 V/2 A (USB 3.0 supported)	
	Serial In	D-sub 9-pin x 1, RS-232C Compatible	
	DIGITAL LINK	—	
	LAN	RJ45 x 1, 10BASE-T/100BASE-TX/1000BASE-T, Compatible with PLink™	
GENERAL	IR In/Out	Stereo Mini Jack (M3) x 1 / x 1	
	Audio Out	Stereo Mini Jack (M3) x 1 / Variable Output (∞ - 0 dB) (at 1 kHz 0 dB Input, 10 kΩ Loaded)	
	Power Requirements	220-240 V AC, 50 Hz/60 Hz	220-240 V AC, 50 Hz/60 Hz
	Power Consumption	178 W	162 W
	Power Off Condition	Approx. 0.3 W	Approx. 0.3 W
	Stand-by Condition	Approx. 0.5 W	Approx. 0.5 W
	Dimensions (W x H x D)	1124 x 647 x 70 mm (44.3" x 25.5" x 2.8")	969 x 560 x 61 mm (38.2" x 22.1" x 2.4")
	Carton Size (W x H x D)	1238 x 795 x 185 mm (48.7" x 31.3" x 7.3")	1070 x 696 x 159 mm (42.1" x 27.4" x 6.3")
	Bezel Width	11.9 mm (0.5") (T/R/L), 14.4 mm (0.6") (B)	11.9 mm (0.5") (T/R/L), 14.9 mm (0.6") (B)
	Weight	Approx. 14.0 kg (30.9 lbs.)	Approx. 9.0 kg (19.9 lbs.)
OPTIONS	Gross Weight	Approx. 19.0 kg (41.9 lbs.)	Approx. 13.0 kg (28.7 lbs.)
	Pitch for Wall-Hanging	400 x 400 mm (15.8" x 15.8") VESA Compliant	200 x 200 mm (7.9" x 7.9") VESA Compliant
	Built-in Speaker	20W [10W + 10W]	
	Orientation*1	Landscape/Portrait	
	Tilting Angle*2	0-20 degrees forward/backward with landscape/portrait setting	
	Operating Environment	Temperature: 0 °C to 40 °C (32 °F to 104 °F) / for up to 1400 m (4593 ft) altitude, 0 °C to 35 °C (32 °F to 95 °F) / Altitude 1400-2800 m [4593 ft to 9186 ft] / Humidity: 20 % to 80 % (No condensation)	
	Storage Environment	Temperature: -20 °C to 60 °C (-4 °F to 140 °F) / Humidity: 20 % to 80 % (Non condensation)	
	Operating Time*3	18 h/day	
	Pedestal	TY-ST43PE8	TY-ST43PE8
	Wall-hanging Bracket	-	-
OPTIONS	Early Warning Software*4	ET-SWA100 Series	ET-SWA100 Series

*1: When mounting portrait setting, be sure to mount with the main unit's power lamp facing downward.

*2: Please contact your sales representative with regard to the tilt angle before installation.

*3: In case of long time, the moving image is recommended to be displayed. If you display a still picture for an extended period, the image retention might remain on the screen. However, image retention can gradually disappear by displaying a moving images.

*4: Multi Monitoring & Control Software Ver.2.0 or later is required. Suffix of the part number may differ depending on the licence type.

*5: Download the latest Video Wall Manager from Global Website in advance. ([https:// panasonic.net/cns/prodisplays/download/software/vwm/](https://panasonic.net/cns/prodisplays/download/software/vwm/))

Sample applications, such as signage, conference monitors, etc., selected to match the needs

Eye-catching videos of new fashion collections

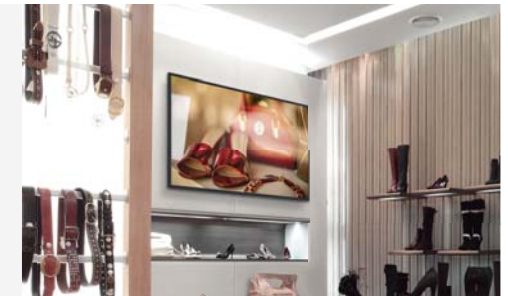
By placing a large display horizontally, images of models in nearly life-size scale can be displayed. The texture of materials in dresses and accessories can even be rendered.

*Life-size displays: Place an 86-inch single screen vertically.



Use USB memory to operate self-made signage

Signage can be used in a standalone configuration without having to assemble a network. The main unit's remote control can also be used for simple playlist production, so you can operate signage without using a PC or set-top box.



More efficient and clear images to share information

Display complicated drawings or detailed materials in an easy-to-read manner. Sharing information among participants will be more smooth. No more need to enlarge tables for easier viewing.



Making the better use of a larger screen

The screen can be used for more efficient video conferences. Images of materials can also be refreshed in real-time during the conference.

*Separate contracts are required for video and web conference systems.



EF1/LFE8 Series



75"



65"



32"



48"



43"

Model no.	TH-75EF1	TH-65EF1		TH-32EF1	TH-48LFE8	TH-43LFE8
Screen Size (Diagonal)/Aspect Ratio	75-inch (1892 mm)/16:9	65-inch (1638 mm)/16:9		32-inch (801 mm)/16:9	48-inch (1209 mm)/16:9	43-inch (1079 mm)/16:9
Panel Type	IPS Panel/E-LED	VA Panel/D-LED		IPS Panel/D-LED	VA Panel/D-LED	VA Panel/D-LED
Effective Display Area (W x H)	1649 x 927 mm (65.0" x 36.5")	1428 x 803 mm (56.2" x 31.6")		698 x 392 mm (27.4" x 15.4")	1054 x 592 mm (41.5" x 23.3")	940 x 529 mm (37.0" x 20.8")
Resolution (H x V)	1920 x 1080	1920 x 1080		1920 x 1080	1920 x 1080	1920 x 1080
Brightness (Typ)	410 cd/m ²	350 cd/m ²		350 cd/m ²	350 cd/m ²	350 cd/m ²
Contrast Ratio	1200:1	4000:1		1400:1	4000:1	3000:1
Response Time	8 ms (G to G)	8 ms (G to G)		8 ms (G to G)	8 ms (G to G)	6.5 ms (G to G)
Viewing Angle (Horizontal/Vertical)	178°/178° (CR≥10)	178°/178° (CR≥20)		178°/178° (CR≥10)	178°/178° (CR≥20)	178°/178° (CR≥10)
Panel Surface Treatment	Anti-Glare (Haze 3 %)	Anti-Glare (Haze 2 %)		Anti-Glare (Haze 1 %)	N/A	N/A
VIDEO In	4-pole Mini Jack (M3) x 1			4-pole Mini Jack (M3) x 1		4-pole Mini Jack (M3) x 1
Audio In(L/R)	—			—		—
HDMI In	HDMI TYPE-A Connector x 2* *VIERA LINK is not supported.			HDMI TYPE-A Connector x 2* *VIERA LINK is not supported.		HDMI TYPE-A Connector x 2* *VIERA LINK is not supported.
Component/RGB In	—			—		—
Audio In (L/R)	—			—		—
DVI-D In	DVI-D 24-pin x 1			DVI-D 24-pin x 1		DVI-D 24-pin x 1
Audio In (L/R)	Stereo Mini Jack (M3) x 1 (Shared with PC In)			Stereo Mini Jack (M3) x 1 (Shared with PC In)		Stereo Mini Jack (M3) x 1 (Shared with PC In)
PC In	Mini D-sub 15-pin x 1			Mini D-sub 15-pin x 1		Mini D-sub 15-pin x 1
Audio In (L/R)	Stereo Mini Jack (M3) x 1 (Shared with DVI-D In)			Stereo Mini Jack (M3) x 1 (Shared with DVI-D In)		Stereo Mini Jack (M3) x 1 (Shared with DVI-D In)
PC Out	—			—		—
USB**	TYPE A USB Connector DC 5V/1A (USB 3.0 is not supported.)			TYPE A USB Connector DC 5V/1A (USB 3.0 is not supported.)		TYPE A USB Connector 5V DC/1A (USB 3.0 is not supported.)
Serial In	D-sub 9-pin x 1, RS-232C Compatible			D-sub 9-pin x 1, RS-232C Compatible		D-sub 9-pin x 1, RS-232C Compatible
DIGITAL LINK	—			—		—
IR In/Out	Mini Jack (M3) x 1 / x 1			Mini Jack (M3) x 1 / x 1		Mini Jack (M3) x 1 / x 1
LAN	RJ45 x 1 10BASE-T/100BASE-TX, Compatible with PLink™			RJ45 x 1 10BASE-T/100BASE-TX, Compatible with PLink™		RJ45 x 1 10BASE-T/100BASE-TX, Compatible with PLink™
Function Slot	—			—		—
Power Requirements	220-240 V AC, 50 Hz/60 Hz	220-240 V AC, 50 Hz/60 Hz		220-240 V AC, 50 Hz/60 Hz	220-240 V AC, 50 Hz/60 Hz	220-240 V AC, 50 Hz/60 Hz
Power Consumption	285 W	175 W		65 W	150 W	135 W
Power off Condition	Approx. 0.3 W	Approx. 0.3 W		Approx. 0.3 W	Approx. 0.3 W	Approx. 0.3 W
Stand-by Condition	Approx. 0.5 W	Approx. 0.5 W		Approx. 0.5 W	Approx. 0.5 W	Approx. 0.5 W
Dimensions (W x H x D)	1681 x 959 x 77 mm (66.2" x 37.8" x 3.02")	1459 x 835 x 82 mm (57.5" x 32.9" x 3.3")		727 x 426 x 64 mm (28.7" x 16.8" x 2.5")	1082 x 624 x 62 mm (42.6" x 24.6" x 2.5")	969 x 560 x 61 mm (38.2" x 22.1" x 2.4")
Carton Size (W x H x D)	1831 x 1227 x 361 mm (72.1" x 48.3" x 14.3")	1655 x 1078 x 280 mm (65.2" x 42.5" x 11.1")		818 x 547 x 139 mm (32.2" x 21.6" x 5.5")	1192 x 773 x 171 mm (47.0" x 30.5" x 6.8")	1070 x 696 x 159 mm (42.2" x 27.4" x 6.3")
Bezel Width	L/R/T/B: 14.8 mm (0.58")	L/R/T: 13.9 mm (0.55"), B: 14.9 mm (0.59")		L/R/T: 11.9 mm (0.5"), B: 17.2 mm (0.7")	L/R/T: 11.9 mm (0.5"), B: 14.7 mm (0.58")	L/R/T: 11.9 mm (0.5"), B: 14.9 mm (0.59")
Weight	Approx. 55.0 kg (121.3 lbs.)	Approx. 24.0 kg (52.9 lbs.)		Approx. 5.3 kg (11.7 lbs.)	Approx. 11.5 kg (25.4 lbs.)	Approx. 8.7 kg (19.2 lbs.)
Gross Weight	Approx. 84.0 kg (185.2 lbs.)	Approx. 34.0 kg (75.0 lbs.)		Approx. 8.0 kg (17.7 lbs.)	Approx. 17.0 kg (37.5 lbs.)	Approx. 14.0 kg (30.9 lbs.)
Pitch for Wall-Hanging	VESA compliant 600 x 400 mm (23.6" x 15.8")	VESA compliant 400 x 400 mm (15.8" x 15.8")		VESA compliant 100 x 100 mm (3.9" x 3.9")	VESA Compliant 200 x 200 mm (7.9" x 7.9")	VESA Compliant 200 x 200 mm (7.9" x 7.9")
Built-in Speaker	20 W [10W + 10 W] (10% THD)	20 W [10W + 10 W] (10% THD)		20 W [10W + 10 W] (10% THD)	20 W [10W + 10 W] (10% THD)	20 W [10W + 10 W] (10% THD)
External Speaker	—	—		—	—	—
Orientation	Landscape*2	Landscape/Portrait		Landscape/Portrait	Landscape/Portrait	Landscape/Portrait
Tilting Angle	0-20 degrees forward with landscape setting*2	0-20 degrees forward with landscape setting*2		0-20 degrees forward with landscape setting*2	0-20 degrees forward with landscape setting*2	0-20 degrees forward with landscape setting*2
Operating Environment	Temperature: 0 °C to 40 °C (32 °F to 104 °F)*3 / Humidity: 20 % to 80 % (Non Condensation)			Temperature: 0 °C to 40 °C (32 °F to 104 °F)*3 / Humidity: 20 % to 80 % (Non Condensation)		Temperature: 0 °C to 40 °C (32 °F to 104 °F)*3 / Humidity: 20 % to 80 % (Non Condensation)
Storage Environment	Temperature: -20 °C to 60 °C (-4 °F to 140 °F)*3 / Humidity: 20 % to 80 % (Non Condensation)			Temperature: -20 °C to 60 °C (-4 °F to 140 °F)*3 / Humidity: 20 % to 80 % (Non Condensation)		Temperature: -20 °C to 60 °C (-4 °F to 140 °F)*3 / Humidity: 20 % to 80 % (Non Condensation)
Operating Time*4	16 h/day			16 h/day		16 h/day
Pedestal	—	—		TY-ST32PE1	—	TY-ST32PE1
Early Warning Software*5	ET-SWA100 Series	ET-SWA100 Series		ET-SWA100 Series	ET-SWA100 Series	ET-SWA100 Series

*1: Due to the terminal block construction, some connection cables and USB memory devices cannot be used. Be sure to check the *CONNECTION

TERMINAL* information in the product specification sheet.

For more information about product specifications, please visit: https://panasonic.net/cns/prodisplays/download/spec_manual/

*2: Please contact your sales representative with regard to the tilt angle before installation.

*3: Environmental temperature to use this unit at high altitudes 1400 m (4593 ft) and higher and below 2800 m (9186 ft) above sea level: 0 °C to 35 °C (32 °F to 95 °F).

*4: In case of long time, the moving image is recommended to be displayed. If you display a still picture for an extended period, the image retention might remain on the screen. However, image retention can gradually disappear by displaying a moving images.

*5: Multi Monitoring & Control Software Ver2.0 or later is required. Suffix of the part number may differ depending on the license type.

SQ1 EQ1

SQ1

SQ1



* **SQ1** **SF2H/SF1H** **SF2** **EQ1**
*12-Axis compatible

3-Axis (RGB) Color Correction

SQ1 SF2H/SF1H LF80 SF2 AF1 EQ1



0

SQ1

A	B
C	D

4 multi screen



PbxP

SF2H/SF1H **LF80**

Portrait Installation Capability

* Expect the TH-75EF1.

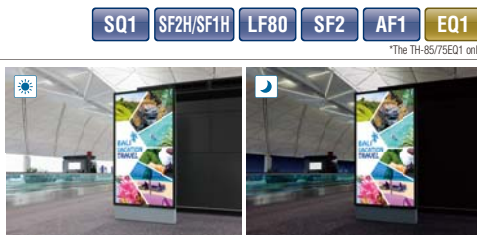
When the Large size display is installed vertically, it can display a person in almost life-size dimensions. It is ideal for digital signage use because it faithfully reproduces the textures and colors of a model's clothing and accessories. It helps to maintain a high-quality brand image. Vertical installation also has no effect on the lifetime of the panel.



Efficiency and Reliability for Continuous 24-hour Operation

The use of highly durable panel materials and quality electronic components ensures dependable 24-hour operation seven days a week.

* Display of moving images is recommended when panels are in use for long periods to prevent image retention. Note that image burn-in can be gradually rectified with the periodical display of moving images.

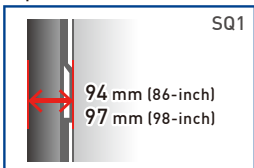


A Stylish and slim design Accentuates the Image

The stylish and slim design complies with the ADA standard (a depth of less than 4-inch (approx.100 mm) with brackets) in all important aspects. The narrow bezel displays higher-impact images, further enhancing the 4K picture quality. The slim profile isn't the least oppressive even when installed in a hanging configuration.

* The availability of the TY-WK98PV1 varies depending on the country.

Depth at wall installation



* ADA stands for the "Americans with Disabilities Act," a United States law made to protect people with disabilities from discrimination.

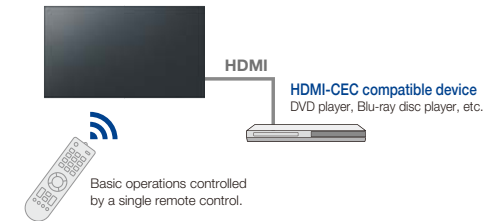
Fanless Design

Standard models robust fanless design prevents problems caused by the intake of dusty air. The displays can be safely installed and operated in high-traffic environments.

HDMI CEC Device Linking Supported

HDMI-CEC compatible devices can be connected to the display by an HDMI cable, enabling the basic operations (such as power ON/OFF) of the compatible devices to be controlled by the display's remote control. Power ON/OFF of the display can also be switched using only the remote control (or main unit buttons) of the HDMI-CEC compatible devices.

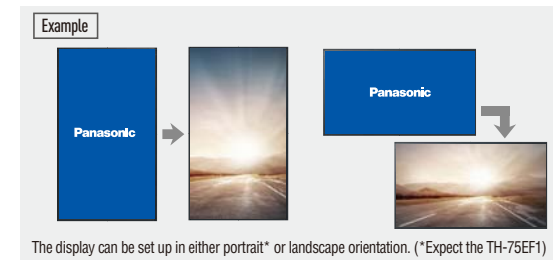
* The control of all devices cannot be guaranteed.



Customizable Original Screen

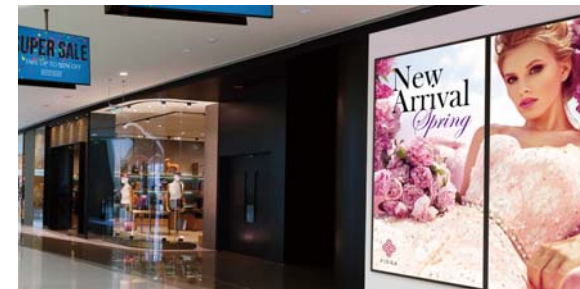
An original image created by your company or other desired picture can be displayed when the unit is turned on and when there is no input signal. The image data for the original screen can be transferred and stored in the display unit via a USB memory. This function allows a company logo mark, brand image, etc., to be displayed when there is no input signal.

• Certain limitations apply to the format for original screen.
* The SQ1/EQ1 Series is compatible with 3480 x 2160 and 1920 x 1080 resolution.



4K Daisy Chain can be Constructed with Even Higher Resolution Multi-Screens

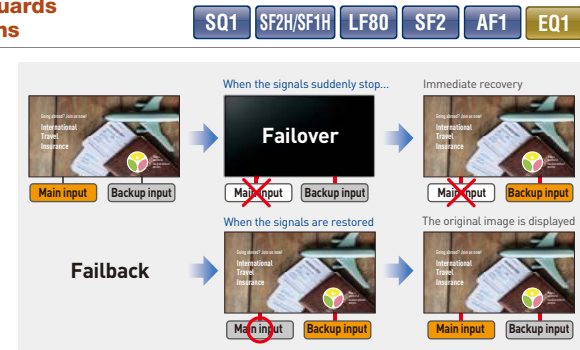
The SQ1 Series is equipped with DisplayPort input/output terminals. Construct a multi-screen that can output 4K images by installing multiple units and connecting them in a daisy chain.



Failover and Failback Safeguards for Mission Critical Situations

These models are equipped with a variety of signal input terminals. If the main video and audio signals are interrupted, the system immediately switches to alternative signals. This makes it ideal for mission critical control rooms and surveillance centers. If the main signals are restored, the original image is displayed.

* The usable combinations of main and backup signals are limited.
For details, see the product website.



Simple Signage Operation with No STB

SQ1SF2H/SF1H

LF80

SF2

EQ1

EF1

LF8

The display can automatically start showing pictures when a USB memory containing data is inserted. The display unit can be used as digital signage without a set-top box or PC. And the content can be displayed smoothly without including the black screen display. What's more, the order of content playback and playback time can be programmed. Content can also be rewritten and multiple displays can be operated via LAN.*

- If it is difficult to insert a USB memory due to installation conditions, use a commercially available extension cable.
- Some files cannot be played back even if they are in the supported format. Regarding restrictions, see the operation manual.
- * Multi Monitoring & Control Software (free) is required.

■ Applicable format

Still Image	JPG, JPEG, JPE, BMP*
Motion Image	AVI, MKV, ASF, WMV, TS, MTS, MP4, 3GP, MOV, FLV, F4V

* BMP is supported only by the 65/75/84EF1, EQ1, SF2 Series.
* The SQ1/EQ1 Series is compatible with the 4K signal.

Playback by one unit

Simultaneous playback by multiple units

One of up to four display units becomes the parent unit, and the other units display images in sync with the parent unit. This enables the display of images in perfect sync when the panels are arranged next to each other.

Play USB Content Instantly

SQ1SF2H

SF2

EQ1

Playing Full HD video, still images, and digital documents from USB storage devices couldn't be easier. Just insert a thumb drive into the USB port and start presenting without needing to connect a PC. The Memory Viewer app enables image* (JPEG, BMP) and video* (WMV, AVI, MOV, MP4, MPG) selection from handy thumbnail previews.

- * In some cases, files may not be viewable even if they are encoded in a supported format.

■ Applicable format

Still Image	JPG, JPEG, JPE, BMP
Motion Image	AVI, MKV, ASF, WMV, GS, MGS, MP4, 3GP, MOV, FLV, F4V



Cloning Function Speeds Up Multiple Display Setup

SQ1SF2H/SF1H

LF80

SF2

AF1

EQ1

EF1

LF8

When installing multiple displays, the Cloning function lets you use a USB memory (or LAN network) to copy the settings of a parent display to other units, thus greatly shortening the setup time.

- [Date & Time], [Network Settings], [LAN Settings] and Display ID cannot be copied.
- The Cloning function works only for displays with the same screen size.

* Only the SF2 Series can be copied using a LAN network.

Parent Display

USB memory

Copy installation data

Child Displays

• Data that can be copied

Setting and set values of [Picture], [sound], [Setup], [Position], and [Options] menus.*

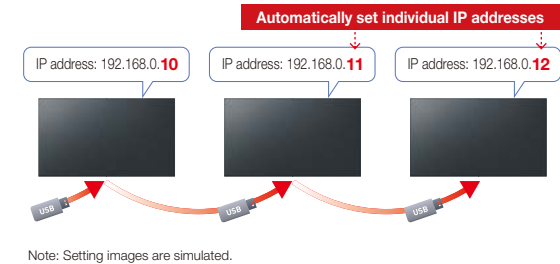
*[Options] are not supported by SQ1/EQ1.

USB Memory Network Settings

SQ1SF2

EQ1

Using a USB memory device, the network setting can be made for multiple displays. Individual IP addresses for each unit are automatically set.



Make Your Signage Easy with Panasonic Application

SQ1SF2H/SF1H

SF2

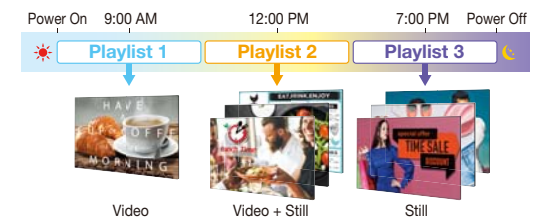
EQ1

The SQ1, SF2H/SF1H, SF2, and EQ1 Series features a USB Media Player function that allows easy signage playback. Content Management Software is an application software for scheduling digital signage playback on a computer. It also allows power ON/OFF to be set.

For more information about Content Management Software Version 3.2, please visit:
<https://panasonic.net/cns/prodisplays/download/software/>

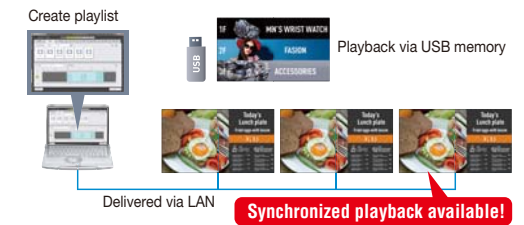
Play Content Automatically with Scheduling Function

Content Management Software for PC Version 3.2 (free) enables easy playlist creation with media support including combinations of still and video images. You can set up schedules for playing and closing your media playlist at predetermined dates and times.



Convenient Playlist and Schedule Syncing

Playlists and schedules created with Content Management Software can be transferred to displays with USB memory, or via LAN. Synchronized playback on multiple displays is also supported.

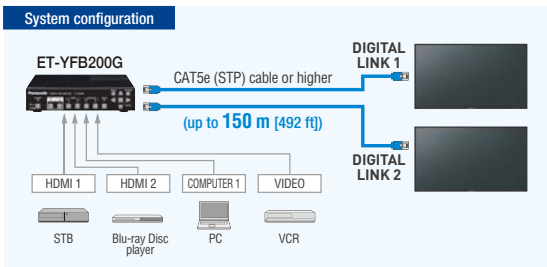


DIGITAL LINK Function Enables Simple Installation and Low System Costs

SQ1SF2HLF80SF2

Using DIGITAL LINK makes it possible to transmit video, audio and control signals over a long distance (up to 150 m [492 ft]) with a single LAN cable^{*1}. Easy cabling also reduces labor during setup. This provides transmission of high-quality images and sounds, as well as remote control.

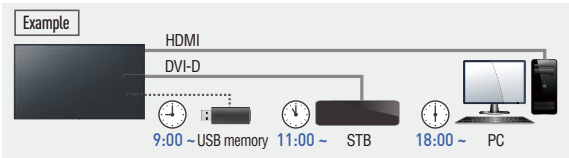
^{*1}: When connected with the [Long reach] mode, the maximum transmission distance is 150 m (492 ft). In this case, the unit can receive the signals of up to 1080/60p. A CAT5e (STP) cable or higher is required. This supports 4K video over distances of up to 50 m (164 ft) with a single LAN cable.
^{*2}: TH-65SF2E (for Europe/CIS) and TH-65/55/49/43SF2W (for Asia, Middle East, Africa) only.



Timer-Programmable Switching of Device Connection

SQ1SF2HSF2EQ184/75/65EF1

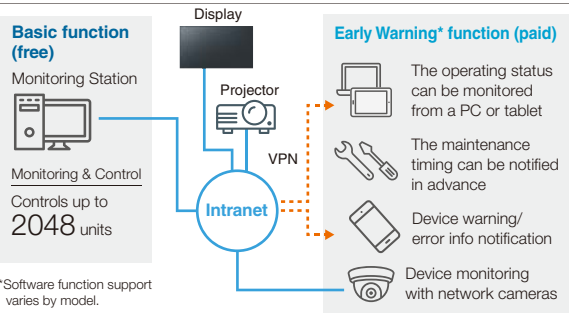
The timer function of the display unit can be used to change connected signal source devices at a desired time. This allows an easy change of displayed content according to the application or the progress of an event.



Multi Monitoring & Control Software

SQ1SF2H/SF1HLF80SF2AF1EQ1EF1LFE8

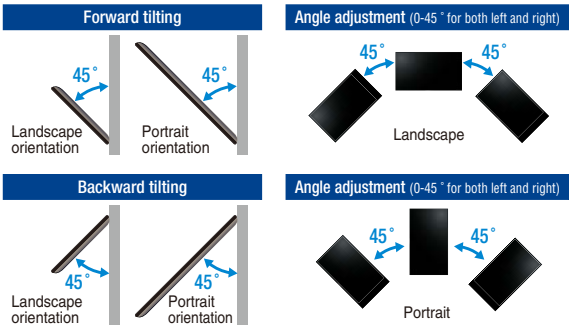
Compatible with Multi Monitoring & Control Software for addition of new functions, such as automatic searching for map displays and registered devices. Displays and peripheral equipment on the intranet can be controlled and their status can be monitored. Also error notification and error indication can be detected by an indication monitoring function (for a fee) for improved maintenance.



Choose the Installation to Match Your Application

Panasonic displays are designed for use in either portrait or horizontal orientation with no effect on panel color and lifespan, further reducing TCO. A tilt installation up to 45 degrees forward or backward is also possible. The angle can be adjusted for easy viewing when installed in a high location.

^{*} The installable angle varies depending on the model. For details, see the specifications page for each model. For more information on the specifications page, please visit the download page.
https://panasonic.net/ons/prodisplays/download/spec_manual/

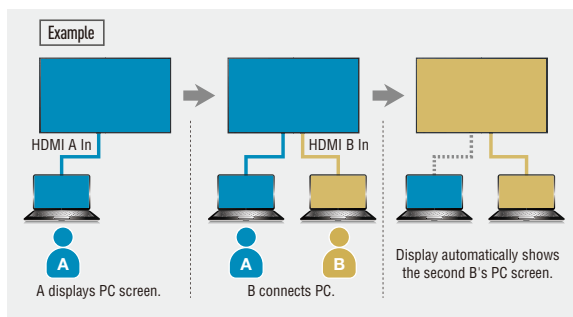


Smooth Switching of Presenters

SQ1SF2HSF2EQ184/75/65EF1

These displays automatically switches source signals when the input signal for the current content stops or when an input signal other than the signal of the current content is received. When presenters change during a meeting, the displayed image can be switched easily by simply changing the cable connection, thus eliminating the need to operate the remote control.

^{*} Only analog (PC input)/digital (HDMI input or DVI-D input) signal switchover is supported. (84/75/65EF1 only)
^{*} The 2 switching inputs must be set in advance.
^{*} This function may not operate correctly depending on the image playback device.
^{*} Digital-digital switching is supported by the SQ/EQ Series. Analog-digital switching is supported by the SF2H/SF2/EF1 Series.



Built-in Speakers for the Playback of Content with Sound

All models are supported

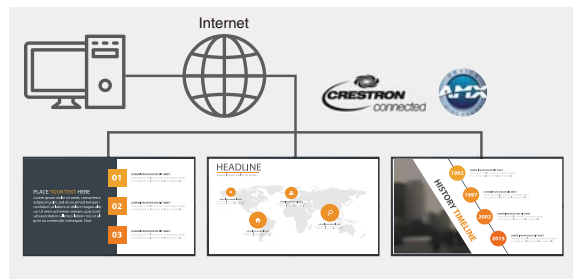
The display unit has built-in speakers so that it can playback content with sound without the connection of external speakers. This allows maximum use of a limited space for the installation of a large-screen display



Supports LAN Content Connection

SQ1SF2H/SF1HLF80SF2EQ1LFE8

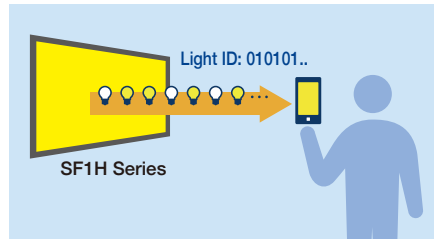
The display can be controlled by LAN or RS-232C. You can configure the display into your existing control system, and can control several devices simultaneously. It also supports AMX or Crestron Connected™ LAN control.



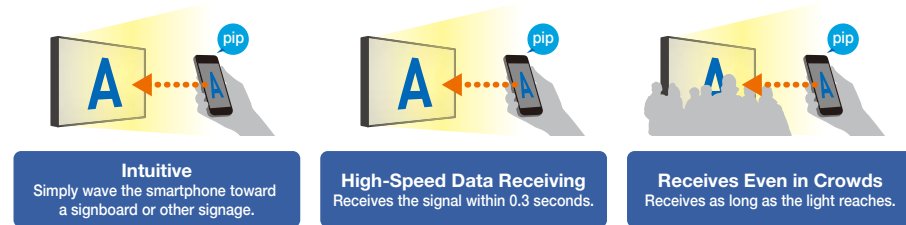
Built-in Light ID Transmission Function Sends and Receives Information

An originally developed, high-speed backlight control technology has achieved Light ID transmission from displays by modulating (blinking) light at high speed. The ID signals transmitted from the display are read by a smartphone* to relay a variety of information, such as traffic guidance or news about shops or products. The displayed content can also be provided in the smartphone owner's native language.

*The smartphone must satisfy usage conditions, such as the OS version and camera performance. A special application must also be installed.

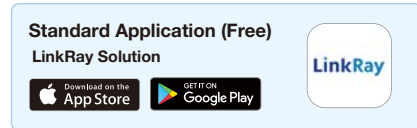


Light ID Technology Features



Applications for LinkRay

Panasonic provides a dedicated LinkRay Solution app for iOS/Android™. Users can download to supported smartphones and tablets free.



Supported Operating Systems

iOS Devices	iOS 8.0 and later
Android Devices	Android 5.0 and later

Note: Some devices may not operate correctly even if minimum requirements are met. To get the latest information concerning devices tested for compatibility, please visit the Panasonic LinkRay website.

<https://panasonic.net/cns/LinkRay/>

Feature video



LinkRay [Introducing the Technology]



LinkRay [Use Cases]



LinkRay Solution@Live & Event Industrial Exhibition



Usage Case Examples & Benefits

Supporting Inbound Travelers in Any Language

LinkRay enables transportation hubs, such as airports, to improve service levels and reduce stress by delivering customized content in the language native to a visitor's device. This information could range from simple sign and map translation to providing directions with third party mapping apps to supplying information on available services within facilities. Navigating high-stress environments becomes easy for tourists, enhancing their experience.



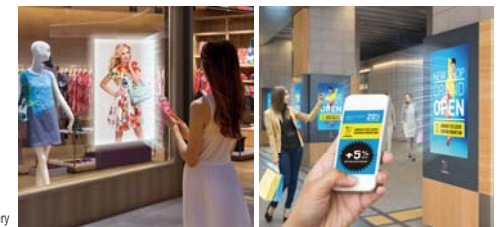
Information Delivery that Enhances Value

Interactive content that enhances exhibits at cultural facilities, such as museums, art galleries, and tourist centers, as well as material supporting retail items, can be provided instantly, deepening understanding or supplying more detailed marketing material on products. This helps to drive sales. LinkRay technology reduces the need for extraneous POS materials, reducing cost and clutter, so items or exhibits can be displayed to maximum effect.



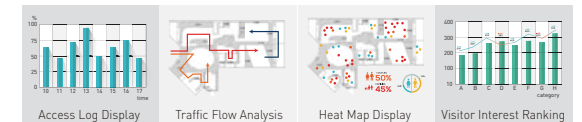
Increase Buyer Motivation with Augmented Signage

Presenting detailed product information together with promotional coupons or discount codes instantly within a built-for-purpose app helps to create a sales-positive environment. Tailoring information for individual customers can help increase foot traffic in shops and increase click-throughs to online stores.



Market Effectively by Visualizing Consumer Intention

Tools for analyzing the frequency of access to Light ID transmitters yields invaluable information that can be applied in various practical ways, such as adjustment of point-of-sale displays and optimization of shopfloor layouts to achieve desired sales outcomes.



[AF1 Series]

Evolving with Your Needs

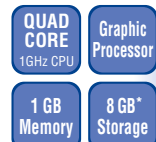
Android™- and HTML5-based OpenPort PLATFORM® Gives Freedom to Customize and Grow with Digital Signage Apps, Simplifies Everyday Use. The AF1 Series incorporates a high-performance SoC (System on a Chip) with a 1 GHz Quad-Core CPU, 1 GB RAM, 8 GB Storage. All this is supported by an alliance with a leading signage software developer to jointly verify application operation.



The Android robot is reproduced or modified from work created and shared by Google and used according to terms described in the Creative Commons 3.0 Attribution License.

Evolving with Your Needs

Simple, expandable, and reliable, the AF1 Series' Android™-based OpenPort PLATFORM® is powered by a high-performance SoC (System on a Chip) with a 1 GHz quad-core CPU, 1 GB of memory, and 8 GB* of internal storage. Together with verified apps created by global alliance partners for custom signage and other roles in business, these adaptive displays deliver your message with maximum impact now and in the future.

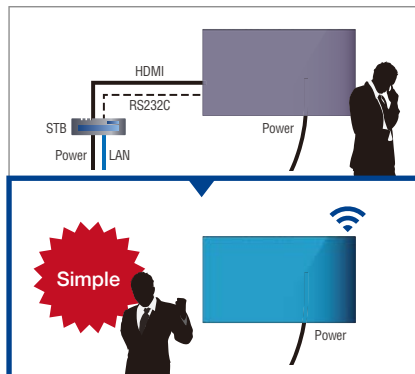


CPU, GPU, and memory are all included in an SoC (System on a Chip).
* Total capacity of storage including OS.



No Need for External Devices and Cables

Thanks to the built-in media player function, external devices such as set-top boxes, PCs, and associated cabling are not required for digital signage applications. Wireless functionality paves the way to simple, stress-free installation while saving you time and money.



Panasonic Original Home Screen

Initial setup of network and language preferences is easy using the remote controller* and original Panasonic Home Screen.

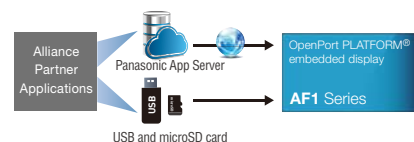
* Some setting and application operations cannot be performed using the remote control. In this case, use a USB mouse to operate.



Simple App Installation

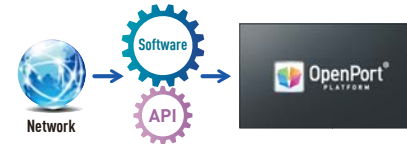
Applications are easily accessed and installed via Panasonic App Server*, which streamlines settings before operation. App installation is also enabled via USB drive or microSD card.

* Certain partner apps not supported.



Panasonic API Expands Application Functions

Panasonic's clear and intuitive API (Application Programming Interface) enables the expansion of application functions, allowing the display to be controlled remotely without need of RS232C or other complicated applications.



A Reliable, Fully Certified Platform

The OpenPort PLATFORM® based on Android™ is fully certified by Google to assure stable, secure, and reliable operation.

Mutual Check with App Alliance Partners

Applications running on OpenPort PLATFORM® are thoroughly checked by alliance partners and Panasonic for stable and secure operation.



See our partners:
<https://panasonic.net/cns/prodisplays/products/af1/#partners>

Optional Early Warning Software (ET-SWA100 Series)

Optional ET-SWA100 Series* Early Warning Software monitors the displays and projectors connected to an intranet and informs you when an abnormality is detected or there are symptoms of trouble. With this software installed, a monitoring server can be controlled remotely via tablet or PC.

* Multi Monitoring & Control Software Ver2.0 or later is required. Part number suffix may differ depending on the license type.

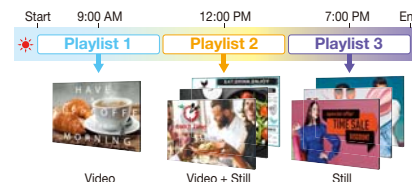
Make Your Signage Easy with Panasonic Application

AF1 Series displays include a builtin Signage Player Application* that eliminates need of an external Settop Box (STB). As well as saving space, your signage system becomes smart and simple.

* OpenPort PLATFORM® Version 2.0 firmware (or later) is required.

Play Content Automatically with Scheduling Function

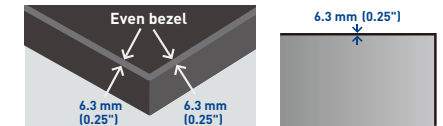
Content Management Software for PC Version 1.1 (free) enables easy playlist creation with media support including combinations of still and video images. You can set up schedules for playing and closing your media playlist at predetermined dates and times.



Standard

Bright and Stylish IPS Display

The slim-bezel AF1 Series is offered in 42-, 49-, and 55-inch sizes and features an edge-lit LED IPS panel with a high 500 cd/m² of brightness. This efficient technology assures uncommonly good off-axis visibility, preserving accurate color reproduction even in bright ambient light. Furthermore, the AF1 Series features a slim 6.3 mm-bezel-width that boosts perceived image size while enhancing any interior design.



Supports Connection of Peripheral Devices

Peripheral devices such as a mouse, keyboard, or USB camera can be connected to AF1 Series displays to further expand functionality.



Note: Some USB devices are not supported.

Supports External Memory Devices

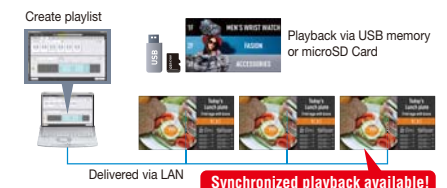
USB drives and microSD cards can also be used to expand the 8 GB internal memory storage capacity.



For more information about Content Management Software Version 1.1, please visit:
<https://panasonic.net/cns/prodisplays/download/software/>

Convenient Playlist and Schedule Syncing

Playlists and schedules created with Content Management Software can be transferred to displays with USB memory, microSD Card, or via LAN. Synchronized playback on multiple displays is also supported.



VF2H/VF1H VF2/LFV Series

Available from December 2019



Available from December 2019



Video Wall

Model no.	TH-55VF2H	TH-55VF1H	TH-55VF2	TH-55LFV70
Screen size (Diagonal)/Aspect Ratio	55-inch (1387 mm)/16:9	55-inch (1387 mm)/16:9	55-inch (1387 mm)/16:9	55-inch (1387 mm)/16:9
Panel Type	IPS/Direct LED	IPS/Direct LED	IPS/Direct LED	IPS/Direct LED
Effective Display Area (W x H)	1209.6 x 680.3 mm (47.62" x 26.78")	1209 x 680 mm (47.6" x 26.7")	1209.6 x 680.3 mm (47.62" x 26.78")	1209 x 680 mm (47.6" x 26.7")
Resolution (H x V)	1920 x 1080	1920 x 1080	1920 x 1080	1920 x 1080
Brightness (Typ.)	700 cd/m ²	700 cd/m ²	500 cd/m ²	700 cd/m ²
Contrast Ratio	1100:1	1200:1	1100:1	1200:1
Dynamic Contrast Ratio	TBD	500000:1	TBD	500000:1
Response Time	8.0 ms (G to G)	8.0 ms (G to G)	8.0 ms (G to G)	12 ms (G to G)
Viewing Angle (Horizontal/Vertical)	178° / 178° (CR≥10)	178° / 178° (CR≥10)	178° / 178° (CR≥10)	178° / 178° (CR≥10)
Panel Surface Treatment	Anti-Glare (Haze 28 %) (TBD)	Anti-Glare (Haze 44 %)	Anti-Glare (Haze 28 %) (TBD)	Anti-Glare (Haze 44 %)
HDMI In	HDMI Type A Connector x 1		HDMI Type A Connector x 1	
VIDEO In	—	BNC x 1 (Shared with Component In)	—	BNC x 1 (Shared with Component In)
Audio In (L/R)	—	Pin Jack x 1 set (Shared with Component In.)	—	Pin Jack x 1 set (Shared with Component In.)
Component/RGB In	—	BNC x 1 set (Shared with VIDEO In)	—	BNC x 1 set (Shared with VIDEO In)
Audio In (L/R)	—	Pin Jack x 1 set (Shared with VIDEO In)	—	Pin Jack x 1 set (Shared with VIDEO In)
DisplayPort In	DisplayPort x 1 (DP1.1a Dual Mode Only)	DisplayPort x 1 (DP1.1 support, Dual Mode only)	DisplayPort x 1 (DP1.1a Dual Mode Only)	DisplayPort x 1 (DP1.1 support, Dual Mode only)
DisplayPort Out	—	—	—	—
DVI-D In	DVI-D 24-pin x 2 (Female)		DVI-D 24-pin x 2 (Female)	
Audio In (L/R)	Stereo Mini Jack (M3) x 1 (Shared with PC In)		Stereo Mini Jack (M3) x 1 (Shared with PC In)	
DVI-D Out	—		—	
PC In	Mini D-Sub 15-pin x 1 (Female)		Mini D-Sub 15-pin x 1 (Female)	
Audio In (L/R)	Stereo Mini Jack (M3) x 1 (Shared with DVI-D In)		Stereo Mini Jack (M3) x 1 (Shared with DVI-D In)	
DVI-I Out	—		—	
USB	USB Connector (TYPE-A) x 1, DC 5 V/500 mA (USB2.0)*	USB Connector (TYPE-A) x 1, DC 5 V/500 mA (USB3.0 is not supported.)	USB Connector (TYPE-A) x 1, DC 5 V/500 mA (USB2.0)*	USB Connector (TYPE-A) x 1, DC 5 V/500 mA (Memory Viewer only, USB3.0 is not supported.)
Serial In/Out	D-Sub 9-pin x 1 (Male) / x 1, RS-232C Compatible		D-Sub 9-pin x 1 (Male) / x 1, RS-232C Compatible	
DIGITAL LINK In/DIGITAL LINK Out	RJ45 x 1 / x 1, 100 BASE-TX, Compatible with long reach mode and PLink™ (Shared with LAN)		RJ45 x 1 / x 1, 100 BASE-TX, Compatible with long reach mode and PLink™ (Shared with LAN)	
LAN	RJ45 x 1 / x 1, (100 BASE-TX, Compatible with PLink™) (Shared with DIGITAL LINK)		RJ45 x 1 / x 1, (100 BASE-TX, Compatible with PLink™) (Shared with DIGITAL LINK)	
IR In/Out	Stereo Mini Jack (M3) x 1 / x 1		Stereo Mini Jack (M3) x 1 / x 1	
Audio In	Stereo Mini Jack x 1, Pin Jack x 1 set	—	Stereo Mini Jack x 1, Pin Jack x 1 set	—
Audio Out	Stereo Mini Jack (M3) x2, 0.5 V [rms] Variable (- ∞ ~ 0 dB) (1 kHz 0 dB Input, 10 kΩ Load)	Stereo Mini Jack (M3) x 1 set	Stereo Mini Jack (M3) x2, 0.5 V [rms] Variable (- ∞ ~ 0 dB) (1 kHz 0 dB Input, 10 kΩ Load)	Pin Jack x 1 set
Power Requirements	220-240 V AC, 50 Hz/60 Hz		220-240 V AC, 50 Hz/60 Hz	
Power Consumption	TBD		TBD	
Stand-by Condition	Approx. 0.5 W		Approx. 0.5 W	
Dimensions (W x H x D)	1210.6 x 681.3 x TBD mm (47.66" x 26.82" x TBD)		1210.6 x 681.3 x TBD mm (47.66" x 26.82" x TBD)	
Carton Size (W x H x D)	TBD		TBD	
Bezel Width	T/B/L/R: 0.44 mm (0.017")		T/B/L/R: 0.44 mm (0.017")	
Bezel to Bezel ^{*1}	0.88 mm (0.034") (Multi Screen)		0.88 mm (0.034") (Multi Screen)	
Weight	TBD		TBD	
Gross Weight	TBD		TBD	
Pitch for Wall-Hanging	VESA compliant 400 x 400 mm (15.8" x 15.8")		VESA compliant 400 x 400 mm (15.8" x 15.8")	
External Speaker	—		—	
Orientation ^{*2}	Landscape/Portrait		Landscape/Portrait	
Tilting Angle ^{*2}	Vertical Only		Vertical Only	
Operating Environment	Temperature: 0 °C to 40 °C (32 °F to 104 °F) ^{*3} / 0 °C to 35 °C (32 °F to 95 °F) ^{*4} / Humidity: 20% to 80% (No Condensation)		Temperature: 0 °C to 40 °C (32 °F to 104 °F) ^{*3} / 0 °C to 35 °C (32 °F to 95 °F) ^{*4} / Humidity: 20% to 80% (No Condensation)	
Storage Environment	TBD		TBD	
Operating Time ^{*6}	24 h/day		24 h/day	
Cover Frame Kit	—		—	
Installation Mount	—		—	
Early Warning Software ^{*7}	ET-SWA100/105 Series		ET-SWA100/105 Series	
Auto Display Adjustment Upgrade Kit ^{*8}	TY-VUK10		TY-VUK10	
Multi Window Processor	—		—	

*1: Bezel-to-Bezel distance means the combined top and bottom (or left and right) bezel width of adjacent displays in multi-screen. The gap between displays is not included. Note a gap of 0.5 mm (0.02") or more is required when installing multiple displays.

*2: Please contact your sales representative with regard to the tilt angle before installation.

*3: For up to 1400 m (4593 ft) altitude. *4: For between 1400m (4593 ft) to 2800 m (9186 ft) altitude. *5: For up to 2000 m (6562 ft) altitude.

*6: In case of long time, the moving image is recommended to be displayed. If you display a still picture for an extended period, the image retention might remain on the screen. However, image retention can gradually disappear by displaying a moving images.

*7: Multi Monitoring & Control Software Ver. 2.1 or later is required. Suffix of the part number may differ depending on the license type.

*8: Download the latest Video Wall Manager from Global Website in advance. (<https://panasonic.net/cns/prodisplays/download/software/vwm/>)



Model no.		TH-55LFV9	TH-55LFV8		TH-49LFV8	TH-55LFV6
DISPLAY PANEL	Screen size (Diagonal)/Aspect Ratio	55-inch (1387.8 mm)	55-inch (1387 mm)		49-inch (1232 mm)	55-inch (1387 mm)
	Panel Type	IPS/Direct LED	IPS/Direct LED		IPS/Direct LED	IPS/Direct LED
	Effective Display Area (W x H)	1209.6 x 680.4 mm (47.62" x 26.78")	1209 x 680 mm (47.6" x 26.7")		1074 x 604 mm (42.3" x 23.8")	1209 x 680 mm (47.6" x 26.7")
	Resolution (H x V)	1920 x 1080	1920 x 1080		1920 x 1080	1920 x 1080
	Brightness (Typ.)	500 cd/m ²	500 cd/m ²		450 cd/m ²	500 cd/m ²
	Contrast Ratio	1200:1	1400:1		1300:1	1400:1
	Dynamic Contrast Ratio	TBD	500000:1		500000:1	500000:1
TERMINAL	Response Time	8.0 ms (G to G)	12 ms (G to G)		8.0 ms (G to G)	12 ms (G to G)
	Viewing Angle (Horizontal/Vertical)	178° / 178° (CR≥10)	178° / 178° (CR≥10)		178° / 178° (CR≥10)	178° / 178° (CR≥10)
	Panel Surface Treatment	Anti-Glare (Haze 28 %) (TBD)	Anti-Glare (Haze 10 %)		Anti-Glare (Haze 3 %)	Anti-Glare (Haze 10 %)
	HDMI In	HDMI Type A Connector x 2			HDMI Type A Connector x 2	
	VIDEO In	BNC x 1 (Shared with Component In)	BNC x 1 (Shared with Component In)		BNC x 1 (Shared with Component In)	BNC x 1 (Shared with Component/RGB In)
	Audio In (L/R)	Stereo Mini Jack x 1 (Shared with Component In)	Pin Jack x 1 (Shared with Component In)		Pin Jack x 1 (Shared with Component In)	Pin Jack x 1 (Shared with Component/RGB In)
	Component/RGB In	BNC x 1 set (Shared with VIDEO In)	BNC x 1 set (Shared with VIDEO In)		BNC x 1 set (Shared with VIDEO In)	
GENERAL	Audio In (L/R)	Stereo Mini Jack x 1 (Shared with Video In)	Pin Jack x 1 (Shared with VIDEO In)		Pin Jack x 1 (Shared with VIDEO In)	
	DisplayPort In	DisplayPort x 1 (DP1.1a / DP1.2)	DisplayPort x 1 (DP1.2 support, HDDP1.3 Compatible)		DisplayPort x 1 (DP1.2 support, HDDP1.3 Compatible)	—
	DisplayPort Out	DisplayPort x 1	DisplayPort x 1 (DP1.2 support, HDDP1.3 Compatible)		DisplayPort x 1 (DP1.2 support, HDDP1.3 Compatible)	—
	DVI-D In	DVI-D 24-pin x 1 (Female)			DVI-D 24-pin x 1 (Female)	
	Audio In (L/R)	Pin Jack (L+R) x 1 set (Shared with PC In)	Stereo Mini Jack (M3) x 1 (Shared with PC In)		Stereo Mini Jack (M3) x 1 (Shared with PC In)	
	DVI-D Out	—	—		—	DVI-D 24-pin x 1 (Female)
	PC In	Mini D-Sub 15-pin x 1 (Female)			Mini D-Sub 15-pin x 1 (Female)	
	Audio In (L/R)	Pin Jack (L+R) x 1 set (Shared with DVI-D In)	Stereo Mini Jack (M3) x 1 (Shared with DVI-D In)		Stereo Mini Jack (M3) x 1 (Shared with DVI-D In)	
	DVI-I Out	DVI-I 29-pin x 1	DVI-I 29-pin x 1 (Female)		DVI-I 29-pin x 1 (Female)	—
	USB	USB Connector (TYPE-A) x 1, DC 5V/500mA (USB2.0)	USB Connector (TYPE-A) x 1, DC 5V/500 mA (USB3.0 is not supported.)		USB Connector (TYPE-A) x 1, DC 5V/500 mA (USB3.0 is not supported.)	USB Connector (TYPE-A) x 1, DC 5V/1 A (USB3.0 is not supported.)
	Serial In/Out	2.5 mm Phone Jack x 1 / x 1	2.5 mm Stereo Mini Jack x 1 / x 1, RS232C Compatible		2.5 mm Stereo Mini Jack x 1 / x 1, RS232C Compatible	D-sub 9-pin x 1 (Male)/ x 1, RS232C Compatible
	DIGITAL LINK In/DIGITAL LINK Out	—	—		—	—
	LAN	RJ45 x 1, 10 BASE-T / 100 BASE-TX, Compatible with PLink™	RJ45 x 1 (10 BASE-T/100BASE-TX, Compatible with PLink™)		RJ45 x 1 (10 BASE-T/100BASE-TX, Compatible with PLink™)	RJ45 x 1, 10 BASE-T/100 BASE-TX, Compatible with PLink™
	IR In/Out	2.5 mm Phone Jack x 1 / x 1	Stereo Mini Jack (M3) x 1 / x 1		Stereo Mini Jack (M3) x 1 / x 1	
	Audio Out	Stereo Mini Jack (M3) x 1 0.5 V [rms] Variable (-∞ ~ 0 dB) (1 kHz 0 dB Input, 10 kΩ Load)	Stereo Mini Jack (M3) x 1		Stereo Mini Jack (M3) x 1	
OPTIONS	Power Requirements	220-240 V AC, 50 Hz/60 Hz	220-240 V AC, 50 Hz/60 Hz		220-240 V AC, 50 Hz/60 Hz	220-240 V AC, 50 Hz/60 Hz
	Power Consumption	185 W	320 W		220 W	210 W
	Stand-by Condition	Approx. 0.5 W	Approx. 0.5 W		Approx. 0.5 W	Approx. 0.5 W
	Dimensions (W x H x D)	1213.4 x 684.2 x 98.0 mm (47.78" x 26.94" x 3.86")	1213.4 x 684.2 x 95 mm (47.78" x 26.94" x 3.7")		1077.7 x 607.9 x 103.9 mm (42.5" x 24.0" x 4.1")	1213.4 x 684.2 x 95 mm (47.78" x 26.94" x 3.7")
	Carton Size (W x H x D)	TBD	1544 x 973 x 301 mm (60.8" x 38.3" x 11.9")		1374 x 901 x 373 mm (54.1" x 35.5" x 14.7")	1544 x 973 x 301 mm (60.8" x 38.3" x 11.9")
	Bezel Width	L/T: 2.25mm (0.089"), R/B: 1.25mm (0.049")	L/T: 2.25mm (0.089"), R/B: 1.25mm (0.049")		L/T: 2.25mm (0.089"), R/B: 1.25mm (0.049")	L/T: 2.25mm (0.089"), R/B: 1.25mm (0.049")
	Bezel to Bezel*1	3.5 mm (0.14") (Multi Screen)	3.5 mm (0.14") (Multi Screen)		3.5 mm (0.14") (Multi Screen)	3.5 mm (0.14") (Multi Screen)
	Weight	27.0 kg (59.5 lbs.)	Approx. 30.0 kg (66.1 lbs.)		Approx. 22.0 kg (48.5 lbs.)	Approx. 30.0 kg (66.1 lbs.)
	Gross Weight	TBD	Approx. 39.0 kg (86.0 lbs.)		Approx. 35.0 kg (77.2 lbs.)	Approx. 39.0 kg (86.0 lbs.)
	Pitch for Wall-Hanging	VESA compliant 400 x 400 mm (15.8" x 15.8")			VESA compliant 400 x 400 mm (15.8" x 15.8")	
	External Speaker	8 Ω, 20 W [10W + 10 W] (10% THD)			8 Ω, 20 W [10W + 10 W] (10% THD)	
	Orientation*2	Landscape/Portrait	Landscape/Portrait		Landscape/Portrait	Landscape/Portrait
	Tilting Angle*2	Vertical Only	Vertical Only		Vertical Only	Vertical Only
	Operating Environment	Temperature: 0 °C to 40 °C (32 °F to 104 °F)*3/0 °C to 35 °C (32 °F to 95 °F)*4 / Humidity: 20% to 80% (Non Condensation)	Temperature: 0 °C to 40 °C (32 °F to 104 °F)*3 / Humidity: 20-90 % (Non condensation)		Temperature: 0 °C to 40 °C (32 °F to 104 °F)*3 / Humidity: 20-90 % (Non condensation)	Temperature: 0 °C to 40 °C (32 °F to 104 °F)*3/0 °C to 35 °C (32 °F to 95 °F)*4/ Humidity: 10% to 90% (No Condensation)
	Storage Environment	Temperature:-20 °C to 60 °C (-4 °F to 140 °F)/ Humidity: 10% to 90 % (Non condensation)	Temperature:-20 °C to 60 °C (-4 °F to 140 °F)/ Humidity: 5% to 95 % (Non condensation)		Temperature:-20 °C to 60 °C (-4 °F to 140 °F)/ Humidity: 5% to 95 % (Non condensation)	Temperature:-20 °C to 60 °C (-4 °F to 140 °F)/ Humidity: 10% to 90 % (Non condensation)
	Operating Time*6	24 h/day	24 h/day		24 h/day	24 h/day
OPTIONS	Cover Frame Kit	—	TY-CF55VW1		—	—
	Installation Mount	—	TY-VK55LV2		TY-VK49LV2	—
	Early Warning Software*7	ET-SWA100/105 Series	ET-SWA100 Series		ET-SWA100 Series	ET-SWA100/105 Series
	Auto Display Adjustment Upgrade Kit*8	TU-VUK10	TY-VUK10		TY-VUK10	TY-VUK10

*1: Bezel-to-Bezel distance means the combined top and bottom (or left and right) bezel width of adjacent displays in multi-screen. The gap between displays is not included. Note a gap of 0.5 mm (0.02") or more is required when installing multiple displays.

*2: Please contact your sales representative with regard to the tilt angle before installation.

*3: For up to 1400 m (4593 ft) altitude. *4: For between 1400m (4593 ft) to 2800 m (9186 ft) altitude. *5: For up to 2000 m (6562 ft) altitude.

*6: In case of long time, the moving image is recommended to be displayed. If you display a still picture for an extended period, the image retention might remain on the screen. However, image retention can gradually disappear by displaying a moving images.

*7: Multi Monitoring & Control Software Ver. 2.1 or later is required. Suffix of the part number may differ depending on the license type.

*8: Download the latest Video Wall Manager from Global Website in advance. (<https://panasonic.net/cns/prodisplays/download/software/vwm/>)

Installation video



Video Wall Workflow Panasonic TY-VK55LV1

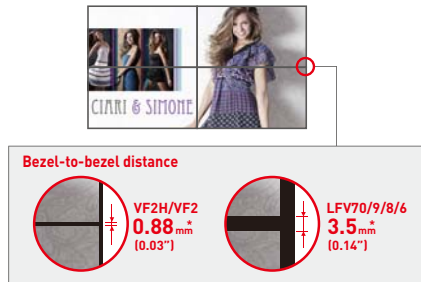


Narrow Bezel for Seamless Video Walls

VF2H/VF2 VF1H LfV70 LfV9 LfV8 LfV6

Narrow frames on Panasonic's LCD Video Wall Series reduce bezel-to-bezel distance to a near-invisible 0.88 mm*. Even when viewed close-up, screen borders are almost indiscernible, resulting in truly spectacular large-format images.

* TH-55VF2H/55VF2 features 0.88 mm (0.03"), TH-55VF1H features 1.8 mm (0.07"), and TH-55LFV70/9/8/6 3.5 mm (0.14"), bezel-to-bezel distance. Bezel-to-bezel distance refers to the combined top and bottom (or left and right) bezel-width of adjacent displays in video-wall configuration. The gap between displays is not included. Note that a gap of 0.5 mm or more is required when installing multiple displays.



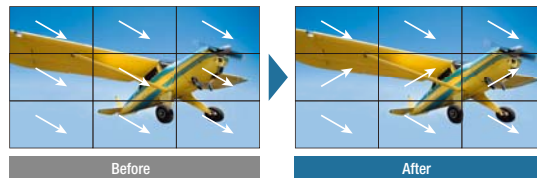
Improved Multi-Screen Video Visibility

VF2H/VF2 VF1H LfV6

When high-speed video is played on multiple screens in a video wall, some image misalignment can occur between vertically adjacent panels. VF2H, VF2, VF1H and LfV6 Series feature a Reverse Scan Function that alternates the scanning direction of vertically adjacent displays to improve image alignment. Frame Control Function, meanwhile, adjusts the number of video frames displayed to reproduce images with natural fluidity.

Reverse Scan Function

Reverses direction of image scanning to smoothly play enlarged video on multiple screens

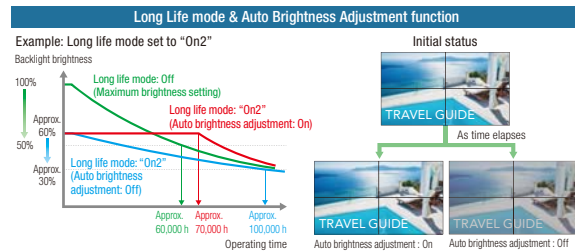


Note: Images are simulated.

Delivers Stable Brightness for Up to 8 Years*

VF2H/VF2 VF1H

The VF1H Series incorporates Long Life mode and a new Auto Brightness Adjustment function. In Long Life mode, backlight brightness is optimized to extend product life. Auto Brightness Adjustment function corrects light output automatically according to the rate of backlight deterioration to maintain constant brightness for longer.



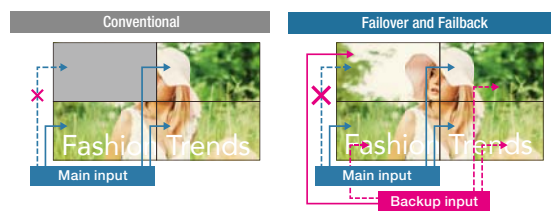
Note: Assuming operating conditions of 25 °C (± 2 °C). Environmental conditions and conditions of usage may affect brightness longevity and operating period. "On2" delivers approximately 60 % maximum specified backlight brightness. Auto brightness adjustment cannot be turned on if panel illumination period has exceeded 1,000 hours. Note: Images and graphs are simulated.

Failover and Failback Safeguards Maintain Image Display

VF2H/VF2 VF1H LfV70 LfV9 LfV6

Digital signal inputs comprise one or two DVI-D terminals together with HDMI, DisplayPort, DIGITAL LINK*, and USB terminals. If primary audio-video signals are interrupted, the display immediately switches to an alternative input. This makes the Panasonic LCD Video Wall Series (except LfV8) well suited for use in control rooms and in other applications where uninterrupted playback is essential.

* DIGITAL LINK available on VF2H, VF2, VF1H and LfV70 only. Display Port available on VF2H, VF2, LfV70 only.



If AV signals via the primary input is interrupted, images are no longer displayed.

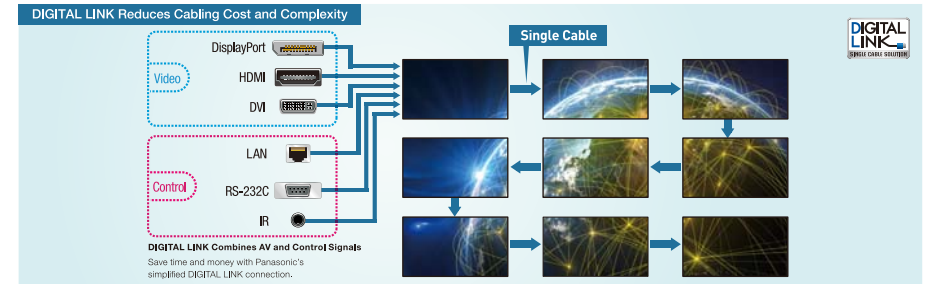
If the primary AV signal is interrupted, the system automatically switches to a backup input so video display is maintained.

Note: Possible combinations of main/backup input signals are limited. For details, please visit the Panasonic website.

DIGITAL LINK Simplifies Installation at Lower Cost

VF2H/VF2 VF1H LfV70

Based on HDBaseT™ technology, the DIGITAL LINK connection on VF2H, VF2, VF1H and LfV70 Series displays supports audio, video, and control signal transmission over long distances, and can also be used to daisy-chain multiple displays via a single cable. This eliminates the need for video splitters and other routing devices. The LfV9/8/6 Series, meanwhile, supports daisy chain via DVI with separate video and control (serial or IR) connections. Note: CAT5e or higher STP cable required.



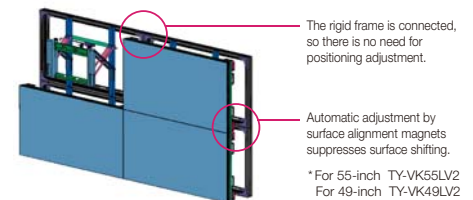
Installation Frame Simplifies Set-up

VF1H LfV70 LfV9 LfV8 LfV6

The optional Installation Mount makes it much easier to configure a video wall. There's no need for complicated display positioning, and fluctuations between installers are covered. It also saves time and cuts labor costs.

Video wall fluctuations occur when the bezels are not correctly aligned vertically and horizontally and the surfaces are not properly adjusted. Installation is quick and easy using the rigid frame, with easy adjustment using surface alignment magnets. This structure also makes the displays easier to remove when performing maintenance.

*Landscape setting only.



Video Wall Manager Software and Auto Display Adjustment Upgrade Kit

VF2H/VF2 VF1H LfV70 LfV9 LfV8 LfV6

Panasonic's free Video Wall Manager software can be used with LCD Video Wall Series displays. With this software, you can calibrate display color using a color sensor*1 (optional), adjust display settings, and control and manage data via PC. If you upgrade this software with an optional TY-VUK10 Auto Camera Adjustment Kit, you can adjust brightness and color among multiple displays automatically using a compatible camera (Nikon D5200/D5300/D5500/D5600)*2.

*1 LfV8 series are not compatible with calibration using a color sensor.

*2 Available only with normal zoom lens: AF-S DX NIKKOR 18-55 mm f/3.5-5.6G VR, AF-S DX NIKKOR 18-140 mm f/3.5-5.6G ED VR, AF-S DX NIKKOR 18-55 mm f/3.5-5.6G VR II

With LfV70 and TY-VUK10 connected



Auto Display Adjustment Upgrade Kit: <https://panasonic.net/cns/prodisplays/products/ty-vuk10/>

Other Features

- Optimized Image Modes (VF1H/LfV6 Series only)
- High-Performance Imaging Engine (VF1H/LfV6 Series only)

BQE1/BFE1 Series



Model no.		TH-75BQE1	TH-65BFE1
DISPLAY PANEL	Screen Size (Diagonal)/Aspect Ratio	75-inch (1893 mm)/16:9	65-inch (1638 mm)
	Panel Type	VA Panel/D-LED	VA Panel/D-LED
	Effective Display Area (W x H)	1650 x 928 mm (64.9" x 36.5")	1428 x 803 mm (56.2" x 31.6")
	Resolution (H x V)	3840 x 2160	1920 x 1080
	Brightness (Typ)	400 cd/m ²	400 cd/m ²
	Contrast Ratio	4000:1	4000:1
	Response Time	8.0 ms (G to G)	8.0 ms (G to G)
	Viewing Angle (Horizontal/Vertical)	178°/178° (CR≥10)	178°/178° (CR≥10)
	Detection Method	Infrared Blocking Detection Method	
	Touch Operation OS	Up to 10-point multi-touch ^{*2} Windows (7/8.1/10), Mac (OS X 10.10/10.11, macOS Sierra)	
TERMINAL	VIDEO In	—	
	Audio In (L/R)	—	
	HDMI In	HDMI Type A Connector x 2	
	Component/RGB In	—	
	Audio In (L/R)	—	
	DVI-D In	DVI-D 24-pin (Digital) x 1	
	Audio In (L/R)	Stereo Mini Jack (M3) x 1 (Shared with PC In)	
	PC In	Mini D-Sub 15-pin x1 (Female), Plug & Play (VESA DDC2B)	
	Audio In (L/R)	Stereo Mini Jack (M3) x 1 (Shared with DVI-D In)	
	Audio Out(L/R)	Stereo Mini Jack (M3) x 1	
	PC Out	Mini D-Sub 15-pin x 1	
	USB A	USB 2.0 Type A Connector x 1 DV 5 V/1 A (USB 3.0 supported: TH-75BQE1 only)	
	USB B	DirectCable USB 2.0 Type A Connector x 1 DV 5 V/ 500 mA (For Touch Panel)	
	Serial In	D-Sub 9-pin x 1 for external control, RS-232C Compatible	
	IR In	Stereo Mini Jack (3.5 mm) x 1	
GENERAL	DIGITAL LINK	—	
	LAN	—	
	Function Slot	—	
	Power Requirements	220-240 V AC, 50 Hz/60 Hz	220-240 V AC, 50 Hz/60 Hz
	Power Consumption	370 W	205 W
	Power Off Condition/Stand-by Condition	Approx. 0 W/Approx. 0.5 W	Approx. 0 W/Approx. 0.5 W
	Dimensions (W x H x D)	1710 x 1072 x 102 mm (67.3" x 42.2" x 4.0") (with speaker mounted)	1490 x 948 x 106 mm (58.7" x 37.4" x 4.2") (with speaker mounted)
	Carton Size (W x H x D)	2010 x 1112 x 250 mm (79.2" x 43.8" x 9.9")	1640 x 1044 x 226 mm (64.6" x 41.2" x 8.9")
	Weight	Approx. 66.0 kg (145.5 lbs.) [Approx. 68.0 kg (149.9 lbs.) with speaker mounted]	Approx. 44.0 kg (97.0 lbs.) [Approx. 46.0 kg (101.4 lbs.) with speaker mounted]
	Gross Weight	Approx. 81.0 kg (178.6 lbs.)	Approx. 57.0 kg (125.7 lbs.)
	Pitch for Wall-Hanging	VESA Compliant 400 x 400 mm (15.8" x 15.8")	VESA Compliant 400x 400 mm (15.8" x 15.8")
	Protective Glass Thickness	Approx. 4 mm (0.16")	Approx. 4 mm (0.16")
	Built-in Speaker	—	—
	External Speaker	20 W [10 W + 10 W] (10 % THD), W764 x H82 x D59 mm (W30.1" x H3.3" x D2.3")	16 W [8 W + 8 W], W764 x H82 x D59 mm (W30.1" x H3.3" x D2.3")
	Orientation	Landscape/Portrait	Landscape/Portrait
	Tilting Angle	Up to 20 degrees backward in landscape orientation	Up to 20 degrees backward in landscape orientation
	Operating Environment	Temperature: 0 °C to 40 °C (32 °F to 104 °F) [for up to 1400 m (4593 ft) altitude] / 0 °C to 35 °C (32 °F to 95 °F) [for between 1400 m (4593 ft) and 2800 m (9186 ft) altitude], Humidity: 20 % to 80 % (Non-condensation)	Temperature: 0 °C to 35 °C (32 °F to 95 °F) [for up to 1400 m (4593 ft) altitude] / 0 °C to 35 °C (32 °F to 95 °F) [for between 1400 m (4593 ft) and 2800 m (9186 ft) altitude], Humidity: 20 % to 80 % (Non-condensation)
	Storage Environment	Temperature: -20 °C to 60 °C (-4 °F to 140 °F), Humidity: 20 % to 80 % (Non-condensation)	Temperature: -20 °C to 60 °C (-4 °F to 140 °F), Humidity: 20 % to 80 % (Non-condensation)
	Operating Time ^{*2}	16 h/day	16 h/day
	Built-in wireless LAN function: Standard	—	—
	Infrastructure Mode	—	—
	Pedestal	TY-ST75PE9	TY-ST75PE9

*1: When using Windows®. When using Mac single touch.

*2: In case running for a long time, the moving image is recommended to be displayed. If you display a still picture for an extended period, the image retention might remain on the screen. However, image retention can gradually disappear by displaying a moving images.

Touch Screen

Whiteboard Software for Full Use of Educational Materials

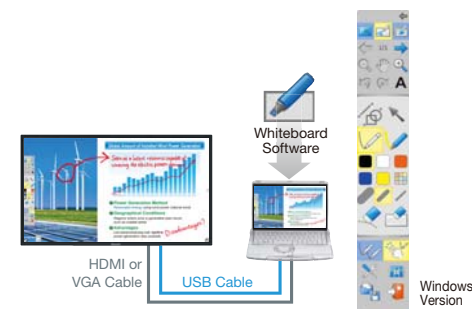
BQE1 BFE1

This software can be used to display educational materials, and to make lessons easier to understand by jotting in notes.

- Presentation Functions* (Magnifying Glass, Pen/Marker)
- Electronic Pen, Finger-Touch Input
- Screen Capture/Recording Function*
- Simultaneous Operation of Multiple Points (BF1: Up to 12 points for Windows®, 4 points for Mac BQE/BFE1: Up to 10 points for Windows®, Single Touch for Mac)
- Reading and Writing of JPEG and Other Image Data
- Writing and Saving of PowerPoint® Data*

* For the latest software please visit our global website:

<https://panasonic.net/cns/prodisplays/download/software/>



Large, Easy-to-See Display Sizes for Classrooms and Conference Rooms

BQE1 BFE1

A large, 65-inch size that is easy to see in classrooms and conference rooms, and an even larger, 75-inch size are available. Select the one that matches the room size. Terminals for PC and HDMI input support highly detailed images (the TH-75BQE1 has 4K resolution) of lesson materials and other data. Even complicated drawings and small text are clear and legible as well.



Touch-Panel Provides Easy-to-Understand Information

Ideal for use as floor maps and signage to describe products in a showroom.

- Multi-touch input allows several people to write simultaneously.
- Easy-to-hear front speaker (included).
- Can be vertically installed. The speaker can also be mounted in the vertical configuration.
- Complies with VESA standards. Third-party mounting fixtures can be used.



Panasonic Software Line-up

In order to maximize the use of professional displays, Panasonic offers a variety of software and applications (some free of charge, and others for a fee).

Content Management Software

Content Management Software makes it possible to create scheduling data and media playlist on a PC and save it to one or more SD Cards. Insert the card into Space Players to execute the schedule. The software reduces complexity for temporary installations or where the device is frequently moved from place to place.



Compatible Display: AF1 Series (Ver.1.1 only), SQ1 Series, SF2 Series, SF2H Series, and EQ1 Series
<https://panasonic.net/cns/prodisplays/download/software/>

Whiteboard Software

This simple software is easy to operate. Requiring no PC installation, it can be started and used from external memory. Switching to a convenient, simple menu when using the Remote Pointer is also supported.



Compatible Displays: BQE1 Series, BFE1 Series
<https://panasonic.net/cns/prodisplays/download/software/#whiteboard>

Auto Display Adjustment Upgrade Kit (TY-VUK10)

Panasonic's free Video Wall Manager software can be used with LCD Video Wall Series displays. With this software, you can calibrate display color using a color sensor, adjust display settings, and control and manage data via PC. If software is upgraded with an optional TY-VUK10 Auto Display Adjustment Upgrade Kit, brightness and color among multiple displays can be automatically calibrated using a compatible camera (Nikon D5200/D5300/D5500/D5600)*.



* Available only with normal zoom lens: AF-S DX NIKKOR 18-55 mm f/3.5-5.6G VR, AF-S DX NIKKOR 18-140 mm f/3.5-5.6G ED VR, AF-S DX NIKKOR 18-55 mm f/3.5-5.6G VR II

For more information, please visit the PASS: <https://panasonic.net/cns/prodisplays/pass/>

Mobile App (iOS/Android)

Wireless Projector

This is an application that lets you send displayed screenshot, document files (PDF, PowerPoint, Excel, Word), and JPEG/PNG images saved to Android devices (tablets and smartphones) to a Panasonic wireless display over a wireless LAN (Wi-Fi), and display them. The application also lets you rotate the screen, enlarge or reduce the screen with a pinch operation, and flip through pages with a flick operation.



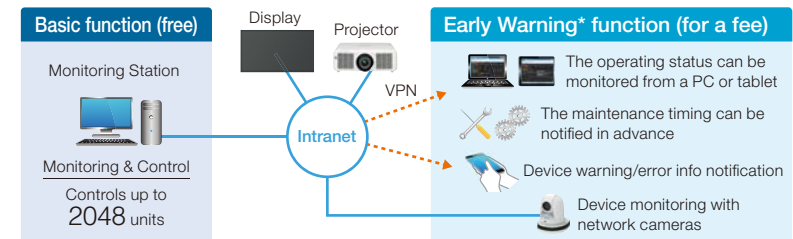
- Dedicated wireless apps for iOS and Android™
- Fewer steps to connect
- Wide media compatibility and functionality

For more information, please visit the Website:
<https://panasonic.net/cns/prodisplays/download/software/#wireless>

Software & App

Multi Monitoring & Control Software

This free Panasonic software offers monitoring and control of up to 2,048 projectors and professional displays over a LAN network from a single PC to simplify management and maintenance while supporting stable operation. If you also purchase Early Warning Software (ET-SWA100), it will monitor the status of projectors and displays on the intranet and inform you of errors when it detects signs of trouble. This contributes to a lighter maintenance load and reduces costs.



* Software function support varies by model.
 * Multi Monitoring & Control Software Ver. 2.0 or higher is required to use the Early Warning function.

Features

• Map Display

Image files, such as floor plans, can be loaded, and the icon for each device can be positioned by 'Drag & Drop'.



• **Auto Search of the Devices to Be Registered**
 You can select the devices to be registered from devices automatically searched on the network.^{*1}

• Other Features

- Monitoring of the status of each device^{*2}
- Execution of control commands
- Scheduling function
- Delivery of the contents list^{*3}

Early Warning Function (ET-SWA100)

Maintenance Scheduling Suggestion^{*3}

It is easier to plan for maintenance by predicting the approximate time for maintenance and service based on the usage monitoring.

Video Stop Detection Using a Network Camera

Images of registered projectors or displays can be monitored regularly by a supported network camera^{*4}.

You can also receive a notification when an abnormality such as a blackout or an image freeze happens.

If you install 'Multi Monitoring & Control Software,' a free 90-day trial is automatically available.



Captured image when an abnormality happens is stored

*1: Some devices can't be registered using the auto search function depending on the device status and network environment.

*2: Software functionality varies depending on the model. *3: Function for supported projectors and professional displays only.

*4: Panasonic Network camera (BB-S/DG-S/VV-S series), Panasonic PTZ camera (AW-UE70/HE40/HE130 series).

For more information about compatible displays, please visit the Website:

https://panasonic.net/cns/prodisplays/download/software/multi/dl_files/DeviceList-Multi_EN.pdf

Early Warning function License * If you install "Multi Monitoring Control Software", a free 90 day trial.

For more information, please visit the PASS: <https://panasonic.net/cns/prodisplays/pass>

Optional Accessories

		Standard																						
		TH-98SQ1	TH-86SQ1	TH-65SQ1	TH-55SQ1	TH-49SQ1	TH-43SQ1	TH-80SF2H		TH-70SF2H	TH-55SF1H	TH-49SF1H	TH-42SF1H	TH-55LF80	TH-49LF80	TH-42LF80	TH-65SF2	TH-55SF2	TH-49SF2	TH-43SF2	TH-55AF1	TH-49AF1	TH-42AF1	
Screen Size (inch)		98	86	65	55	49	43	80		70	55	49	42	55	49	42	65	55	49	43	55	49	42	
MOUNTING OPTIONS	Pedestal	TY-ST75PE9	-	-	-	-	-	-	Yes		Yes	-	-	-	-	-	-	-	-	-	-	-	-	
		TY-ST55PE9	-	-	Yes	Yes		-	-		-	-	-	-	-	-	Yes	Yes	-	-	-	-	-	
		TY-ST43PE9	-	-	-	-	Yes	Yes	-		-	-	-	-	-	-	-	-	Yes	Yes	-	-	-	
		TY-ST43PE8	-	-	-	-		-	-		-	Yes	Yes	Yes	Yes	Yes	Yes	-	-	-	-	Yes	Yes	Yes
		TY-ST32PE1	-	-	-	-	-	-	-		-	-	-	-	-	-	-	-	-	-	-	-	-	
	Wall-hanging Bracket	TY-WK98PV1	Yes	Yes	Yes	-	-	-	-		-	-	-	-	-	-	-	-	-	-	-	-	-	
	Installation Mount (Landscape setting only)	TY-VK55LV2	-	-	-	-	-	-	-		-	-	-	-	-	-	-	-	-	-	-	-	-	
		TY-VK49LV2	-	-	-	-	-	-	-		-	-	-	-	-	-	-	-	-	-	-	-	-	
	Cover Frame Kit for 55"	TY-CF55VW1	-	-	-	-	-	-	-		-	-	-	-	-	-	-	-	-	-	-	-	-	
		TY-CF55VW50	-	-	-	-	-	-	-		-	-	-	-	-	-	-	-	-	-	-	-	-	
	Pitch for Wall Hanging (VESA compliant models)	800 x 500 (M8)	Yes	-	-	-	-	-	-		-	-	-	-	-	-	-	-	-	-	-	-	-	
		600 x 500 (M8)	-	-	-	-	-	-	-		-	-	-	-	-	-	-	-	-	-	-	-	-	
		600 x 400 (M8)	-	Yes	-	-	-	-	-		-	-	-	-	-	-	-	-	-	-	-	-	-	
		600 x 400 (M6)	-	-	-	-	-	-	Yes		-	-	-	-	-	-	-	-	-	-	-	-	-	
		400 x 400 (M8)	-	-	-	-	-	-	-		-	-	-	-	-	-	-	-	-	-	-	-	-	
		400 x 400 (M6)	-	-	Yes	Yes	Yes	Yes	-		Yes	Yes	Yes	-	Yes	Yes	-	Yes	Yes	Yes	Yes	Yes	Yes	-
		400 x 200 (M6)	-	-	-	-	-	-	-		-	-	-	-	-	-	-	-	-	-	-	-	-	
		200 x 200 (M6)	-	-	-	-	-	-	-		-	-	-	Yes	-	-	Yes	-	-	-	-	-	Yes	
		100 x 100 (M4)	-	-	-	-	-	-	-		-	-	-	-	-	-	-	-	-	-	-	-	-	
OTHERS	DIGITAL LINK Switcher	ET-YFB200G	Yes	Yes	Yes	Yes	Yes	Yes		Yes	Yes	Yes	Yes	Yes	Yes	Yes	Yes*2	Yes*2	Yes*2	Yes*2	-	-	-	
	Digital Interface Box	ET-YFB100G	Yes	Yes	Yes	Yes	Yes	Yes		Yes	Yes	Yes	Yes	Yes	Yes	Yes	Yes*2	Yes*2	Yes*2	Yes*2	-	-	-	
	Multi Window Processor	ET-MWP100*1	Yes	Yes	Yes	Yes	Yes	Yes		Yes	Yes	Yes	Yes	Yes	Yes	Yes	Yes	Yes	Yes	Yes	Yes	Yes	Yes	

The specification has a case to change without notice.

*1: The availability varies depending on the country.

*2: SF2W model only.

Optional Accessories

		Entry								Video Wall								Touch Screen						
		TH-86EQ1	TH-75EQ1	TH-65EQ1	TH-55EQ1	TH-50EQ1	TH-43EQ1	TH-75EF1			TH-65EF1	TH-32EF1	TH-48LF8	TH-43LF8	TH-55VF2H	TH-55VF1H	TH-55VF2	TH-55LVF70	TH-55LVF9	TH-55LVF8	TH-49LVF8	TH-55LVF6	TH-75BQE1	TH-65BFE1
Screen Size (inch)		86	75	65	55	50	43	75		65	32	48	43	55	55	55	55	55	55	49	55	75	65	
MOUNTING OPTIONS	Pedestal	TY-ST75PE9	-	Yes	-	-	-	-		-	-	-	-	-	-	-	-	-	-	-	-	Yes	Yes	
		TY-ST55PE9	-	-	Yes	-	-	-		-	-	-	-	-	-	-	-	-	-	-	-	-	-	
		TY-ST43PE9	-	-	-	-	-	-		-	-	-	-	-	-	-	-	-	-	-	-	-	-	
		TY-ST43PE8	-	-	-	Yes	Yes	Yes	-	-	-	Yes	Yes	-	-	-	-	-	-	-	-	-	-	-
		TY-ST32PE1	-	-	-	-	-	-	-	-	Yes	-	-	-	-	-	-	-	-	-	-	-	-	-
	Wall-hanging Bracket	TY-WK98PV1	Yes	Yes	Yes	-	-	-		-	-	-	-	-	-	-	-	-	-	-	-	-	-	-
	Installation Mount (Landscape setting only)	TY-VK55LV2	-	-	-	-	-	-		-	-	-	-	-	-	Yes	-	Yes	Yes	Yes	-	Yes	-	-
		TY-VK49LV2	-	-	-	-	-	-		-	-	-	-	-	-	-	-	-	-	Yes	-	-	-	-
	Cover Frame Kit for 55"	TY-CF55VW1	-	-	-	-	-	-		-	-	-	-	-	-	Yes	-	-	-	-	-	-	-	-
		TY-CF55VW50	-	-	-	-	-	-		-	-	-	-	-	-	-	-	Yes	Yes	Yes	-	Yes	-	-
	Pitch for Wall Hanging (VESA compliant models)	800 x 500 (M8)	-	-	-	-	-	-		-	-	-	-	-	-	-	-	-	-	-	-	-	-	-
		600 x 500 (M8)	-	-	-	-	-	-	Yes		-	-	-	-	-	-	-	-	-	-	-	-	-	-
		600 x 400 (M8)	Yes	-	-	-	-	-	-	Yes	-	-	-	-	-	-	-	-	-	-	-	-	-	-
		600 x 400 (M6)	-	Yes	-	-	-	-	-	-	Yes	-	-	-	-	-	-	-	-	-	-	-	-	-
		400 x 400 (M8)	-	-	-	-	-	-	-	-	-	-	-	-	-	-	-	-	-	-	-	-	-	-
		400 x 400 (M6)	-	-	Yes	-	Yes	-	-	-	-	-	-	-	Yes	Yes	Yes	Yes	Yes	Yes	Yes	Yes	Yes	Yes
		400 x 200 (M6)	-	-	-	Yes	-	-	-	-	-	-	-	-	-	-	-	-	-	-	-	-	-	-
		200 x 200 (M6)	-	-	-	-	-	Yes	-	-	-	-	Yes	Yes	-	-	-	-	-	-	-	-	-	-
	100 x 100 (M4)	-	-	-	-	-	-	-	-	-	Yes	-	-	-	-	-	-	-	-	-	-	-	-	
OTHERS	DIGITAL LINK Switcher	ET-YFB200G	-	-	-	-	-		-	-	-	-	-	-	Yes	-	-	Yes	-	-	-	-	-	
	Digital Interface Box	ET-YFB100G	-	-	-	-	-		-	-	-	-	-	-	Yes	-	-	Yes	-	-	-	-	-	
	Multi Window Processor	ET-MWP100*1	Yes	Yes	Yes	Yes	Yes	Yes	Yes	Yes	Yes	Yes	Yes	Yes	Yes	Yes	Yes	Yes	Yes	Yes	Yes	Yes	Yes	

The specification has a case to change without notice.

*1: The availability varies depending on the country.

Features

Features		Standard																							
		TH-98SQ1	TH-86SQ1	TH-65SQ1	TH-55SQ1	TH-49SQ1	TH-43SQ1	TH-80SF2H		TH-70SF2H	TH-55SF1H	TH-49SF1H	TH-42SF1H	TH-55LF80	TH-49LF80	TH-42LF80	TH-65SF2	TH-55SF2	TH-49SF2	TH-43SF2	TH-55AF1	TH-49AF1	TH-42AF1		
Size (inch)		98	86	65	55	49	43	80		70	55	49	42	55	49	42	65	55	49	43	55	49	42		
SPECIFICATIONS	LinkRay Compatible	-	-	-	-	-	-	Yes		Yes	Yes	Yes	Yes	-	-	-	-	-	-	-	-	-	-		
	Touch Operation	-	-	-	-	-	-	-		-	-	-	-	-	-	-	-	-	-	-	-	-	-		
	IP Rating	-	-	-	-	-	-	-		-	-	-	-	-	-	-	-	-	-	-	-	-	-		
	Operating Time	24	24	24	24	24	24	24		24	24	24	24	24	24	24	24	24	24	24	24	24	24		
	DIGITAL LINK	Yes*1	Yes*1	Yes*1	Yes*1	Yes*1	Yes*1	Yes*1		Yes*1	Yes*1	Yes*1	Yes*1	Yes*1	Yes*1	Yes*1	Yes*1	Yes*1	Yes*1	Yes*1	Yes*1	-	-	-	
	Wireless Function	-	-	-	-	-	-	-		-	-	-	-	-	-	-	-	-	-	-	-	-	-	-	
	Protective Glass	-	-	-	-	-	-	-		-	-	-	-	-	-	-	-	-	-	-	-	-	-	-	
Function Slot	Intel® SDM								-	-	-	-	-	-	-	-	-	-	-	-	-	-	-		
INSTALLATION	Portrait	Yes	Yes	Yes	Yes	Yes	Yes	Yes		Yes	Yes	Yes	Yes	Yes	Yes	Yes	Yes	Yes	Yes	Yes	Yes	Yes	Yes	Yes	
	Multi Screen (Multi Display Setting)*2	Yes	Yes	Yes	Yes	Yes	Yes	Yes		Yes	Yes	Yes	Yes	Yes	Yes	Yes	Yes	Yes	Yes	Yes	Yes	Yes	Yes	Yes	
	Daisy Chain Connection	Yes	Yes	Yes	Yes	Yes	Yes	Yes		Yes	Yes	Yes	Yes	Yes	Yes	Yes	Yes	Yes	Yes	Yes	Yes	Yes	Yes	Yes	
	Pre Calibration	-	-	-	-	-	-	-		-	-	-	-	-	-	-	-	-	-	-	-	-	-	-	
	Fan-less Design	Yes	Yes	Yes	Yes	Yes	Yes	Yes		Yes	Yes	Yes	Yes	Yes	Yes	Yes	Yes	Yes	Yes	Yes	Yes	Yes	Yes	Yes	
FUNCTIONS	Built-in Whiteboard	-	-	-	-	-	-	-		-	-	-	-	-	-	-	-	-	-	-	-	-	-	-	
	USB Media Player	Yes	Yes	Yes	Yes	Yes	Yes	Yes		Yes	Yes	Yes	Yes	Yes	Yes	Yes	Yes	Yes	Yes	Yes	Yes	Yes	Yes	Yes	
	Memory Viewer	Yes	Yes	Yes	Yes	Yes	Yes	Yes		Yes	-	-	-	-	-	-	Yes	Yes	Yes	Yes	Yes	-	Yes	-	
	Data Cloning	USB/LAN								USB/LAN	USB			USB			USB/LAN				USB				
	HDMI CEC	Yes	Yes	Yes	Yes	Yes	Yes	Yes		Yes	-	-	-	-	-	-	Yes	Yes	Yes	Yes	Yes	-	-	-	
	Custmized Image Setting	Yes	Yes	Yes	Yes	Yes	Yes	Yes		Yes	-	-	-	-	-	-	Yes	Yes	Yes	Yes	Yes	-	-	-	
	USB Memory Network Setting	Yes	Yes	Yes	Yes	Yes	Yes	Yes		Yes	-	-	-	-	-	-	Yes	Yes	Yes	Yes	Yes	-	-	-	
	Multi Input Display*3	Yes	Yes	Yes	Yes	Yes	Yes	-		-	-	-	-	-	-	-	-	-	-	-	-	-	-	-	
	Input Search (No Signal Auto Switch Setting/Input Signal Search)	Yes	Yes	Yes	Yes	Yes	Yes	Yes		Yes	Yes	Yes	Yes	Yes	Yes	Yes	Yes	Yes	Yes	Yes	Yes	Yes	Yes	Yes	
	Failover/Failback	Yes	Yes	Yes	-	Yes	Yes	Yes		Yes	Yes	Yes	Yes	Yes	Yes	Yes	Yes	Yes	Yes	Yes	Yes	Yes	Yes	Yes	
	1:1Pixel Mode	-	-	-	-	-	-	-		-	Yes	Yes	Yes	Yes	Yes	Yes	Yes	Yes	Yes	Yes	Yes	Yes	Yes	Yes	
	Color Management	12-axis								6-axis	6-axis			6-axis			6-axis				6-axis				
	Color Enhancement	Yes	Yes	Yes	Yes	Yes	Yes	Yes		Yes	Yes	Yes	Yes	Yes	Yes	Yes	Yes	Yes	Yes	Yes	Yes	Yes	Yes	Yes	
	Adaptive Contrast Correction	Yes	Yes	Yes	Yes	Yes	Yes	Yes		Yes	Yes	Yes	Yes	Yes	Yes	Yes	Yes	Yes	Yes	Yes	Yes	Yes	Yes	Yes	
	Refine Enhancer	Yes	Yes	Yes	Yes	Yes	Yes	Yes		Yes	Yes	Yes	Yes	Yes	Yes	Yes	Yes	Yes	Yes	Yes	Yes	Yes	Yes	Yes	
	Gradation Smoother	Yes	Yes	Yes	Yes	Yes	Yes	Yes		Yes	Yes	Yes	Yes	Yes	Yes	Yes	Yes	Yes	Yes	Yes	Yes	Yes	Yes	Yes	
	Frame Creation	Yes	Yes	Yes	Yes	Yes	Yes	-		-	-	-	-	-	-	-	Yes	-	-	-	-	-	-	-	
	Motion Smoother	-	-	-	-	-	-	-		-	-	-	-	-	-	-	-	-	-	-	-	-	-	-	
	Dynamic Backlight	Yes	Yes	Yes	Yes	Yes	Yes	Yes		Yes	Yes	Yes	Yes	Yes	Yes	Yes	Yes	Yes	Yes	Yes	Yes	Yes	Yes	Yes	
	Set up Timer	Yes	Yes	Yes	Yes	Yes	Yes	Yes		Yes	Yes	Yes	Yes	Yes	Yes	Yes	Yes	Yes	Yes	Yes	Yes	Yes	Yes	Yes	
	Off Timer Setting	Yes	Yes	Yes	Yes	Yes	Yes	Yes		Yes	Yes	Yes	Yes	Yes	Yes	Yes	Yes	Yes	Yes	Yes	Yes	Yes	Yes	Yes	
	Power on Screen Delay	Yes	Yes	Yes	Yes	Yes	Yes	Yes		Yes	Yes	Yes	Yes	Yes	Yes	Yes	Yes	Yes	Yes	Yes	Yes	Yes	Yes	Yes	
	Auto Setup	Yes	Yes	Yes	Yes	Yes	Yes	Yes		Yes	Yes	Yes	Yes	Yes	Yes	Yes	Yes	Yes	Yes	Yes	Yes	Yes	Yes	Yes	
	No Activity Power Off	Yes	Yes	Yes	Yes	Yes	Yes	Yes		Yes	Yes	Yes	Yes	Yes	Yes	Yes	Yes	Yes	Yes	Yes	Yes	Yes	Yes	Yes	
	PJ Link Protocol	Yes	Yes	Yes	Yes	Yes	Yes	Yes		Yes	Yes	Yes	Yes	Yes	Yes	Yes	Yes	Yes	Yes	Yes	Yes	Yes	Yes	Yes	
LAN Control (Network Control)	Yes	Yes	Yes	Yes	Yes	Yes	Yes		Yes	Yes	Yes	Yes	Yes	Yes	Yes	Yes	Yes	Yes	Yes	Yes	Yes	Yes	Yes		
Web Browser Control	Yes	Yes	Yes	Yes	Yes	Yes	Yes		Yes	Yes	Yes	Yes	Yes	Yes	Yes	Yes	Yes	Yes	Yes	Yes	Yes	Yes	Yes		
Remote ID Control (Function)	Yes	Yes	Yes	Yes	Yes	Yes	Yes		Yes	Yes	Yes	Yes	Yes	Yes	Yes	Yes	Yes	Yes	Yes	Yes	Yes	Yes	Yes		
Serial ID Control (Function)	Yes	Yes	Yes	Yes	Yes	Yes	Yes		Yes	Yes	Yes	Yes	Yes	Yes	Yes	Yes	Yes	Yes	Yes	Yes	Yes	Yes	Yes		
Local Dimming	Yes	Yes	Yes	Yes	Yes	Yes	-		-	-	-	-	-	-	-	-	-	-	-	-	-	-	-		
ECO Mode/Power Management Mode	Yes	Yes	Yes	Yes	Yes	Yes	Yes		Yes	Yes	Yes	Yes	Yes	Yes	Yes	Yes	Yes	Yes	Yes	Yes	Yes	Yes	Yes		
Audio Input Select (Switching)	Yes	Yes	Yes	Yes	Yes	Yes	Yes		Yes	Yes	Yes	Yes	Yes	Yes	Yes	Yes	Yes	Yes	Yes	Yes	Yes	Yes	Yes		
SOFTWARE	Multi Monitoring & Control Software Compatible	Yes	Yes	Yes	Yes	Yes	Yes	Yes		Yes	Yes	Yes	Yes	Yes	Yes	Yes	Yes	Yes	Yes	Yes	Yes	Yes	Yes	Yes	
	Early Warning Software Compatible*4	Yes	Yes	Yes	Yes	Yes	Yes	Yes		Yes	Yes	Yes	Yes	Yes	Yes	Yes	Yes	Yes	Yes	Yes	Yes	Yes	Yes	Yes	
	Video Wall Manager	Yes	Yes	Yes	Yes	Yes	Yes	Yes		Yes	Yes	Yes	Yes	Yes	Yes	Yes	Yes	Yes	Yes	Yes	Yes	Yes	Yes	Yes	
	Auto Display Adjustment Upgrade Kit (TY-VUK10)	Yes	Yes	Yes	Yes	Yes	Yes	Yes		Yes	Yes	Yes	Yes	Yes	Yes	Yes	Yes	Yes	Yes	Yes	Yes	Yes	Yes	Yes	
	Content Management Software	Yes	Yes	Yes	Yes	Yes	Yes	Yes		Yes	-	-	-	-	-	-	Yes	Yes	Yes	Yes	Yes	Yes (Ver1.1)			

*1: Long Reach Mode compatible. TH-65SF2E(for Europe/CIS) and TH-65/55/49/42SF2W (for Asia, Middle East, Africa) only.

*2: The number of units that can be set as a group varies depending on the model. For details, see the Operation Manual of each model.

*3: There are restrictions on the input signal and 4-Input Multi Display function. For details, see the Operation Manual of each model.

*4: The part number suffix may differ depending on the license type.

Note: The specifications may vary depending on the model, even for the same function. For details, see the Operation Manual of each model.

Features

Features		Entry												Video Wall								Touch Screen		
		TH-86EQ1	TH-75EQ1	TH-65EQ1	TH-55EQ1	TH-50EQ1	TH-43EQ1	TH-75EF1			TH-65EF1	TH-32EF1	TH-48LFE8	TH-43LFE8	TH-55VF2H	TH-55VF1H	TH-55VF2	TH-55LFEV70	TH-55LFEV9	TH-55LFEV8	TH-49LFEV8	TH-55LFEV6	TH-75BQE1	TH-65BFE1
Size (inch)		86	75	65	55	50	43	75			65	32	48	43	55	55	55	55	55	55	49	55	75	65
SPECIFICATIONS	LinkRay Compatible	-	-	-	-	-	-	-		-	-	-	-	-	-	-	-	-	-	-	-	-	-	-
	Touch Operation	-	-	-	-	-	-	-		-	-	-	-	-	-	-	-	-	-	-	-	-	Yes	Yes
	IP Rating	-	-	-	-	-	-	-		-	-	-	-	-	-	-	-	-	-	-	-	-	-	-
	Operating Time	24	24	18	18	18	18	16		16	16	16	16	24	24	24	24	24	24	24	24	24	16	16
	DIGITAL LINK	-	-	-	-	-	-	-		-	-	-	-	Yes	Yes	Yes	Yes	-	-	-	-	-	-	-
	Wireless Function	-	-	-	-	-	-	-		-	-	-	-	-	-	-	-	-	-	-	-	-	-	-
	Protective Glass	-	-	-	-	-	-	-		-	-	-	-	-	-	-	-	-	-	-	-	-	Yes	Yes
Function Slot	-	-	-	-	-	-	-		-	-	-	-	-	-	-	-	-	-	-	-	-	-	-	
INSTALLATION	Portrait	Yes	Yes	Yes	Yes	Yes	Yes	-		Yes	Yes	Yes	Yes	Yes	Yes	Yes	Yes	Yes	Yes	Yes	Yes	Yes	Yes	Yes
	Multi Screen (Multi Display Setting)*1	Yes	Yes	Yes	Yes	Yes	Yes	Yes		Yes	Yes	Yes	Yes	Yes	Yes	Yes	Yes	Yes	Yes	Yes	Yes	Yes	-	-
	Daisy Chain Connection	-	-	Yes (IR only)				Yes (IR only)		Yes (IR only)	-	Yes (IR only)	Yes	Yes	Yes	Yes	Yes	Yes	Yes	Yes	Yes	Yes	-	-
	Pre Calibration	-	-	-	-	-	-	-		-	-	-	-	Yes	Yes	Yes	Yes	Yes	Yes	Yes	Yes	Yes	-	-
	Fan-less Design	Yes	Yes	Yes	Yes	Yes	Yes	Yes		Yes	Yes	Yes	Yes	Yes	Yes	Yes	Yes	-	-	-	-	-	Yes	Yes
FUNCTIONS	Built-in Whiteboard	-	-	-	-	-	-	-		-	-	-	-	-	-	-	-	-	-	-	-	-	-	-
	USB Media Player	Yes	Yes	Yes	Yes	Yes	Yes	Yes*3		Yes*3	Yes*3	Yes*3	Yes*3	Yes	Yes	Yes	Yes	Yes	-	-	-	Yes	-	-
	Memory Viewer	Yes	Yes	Yes	Yes	Yes	Yes	Yes		-	-	-	-	-	-	-	-	-	-	-	-	-	-	-
	Data Cloning	USB/LAN						USB		USB			USB	USB/LAN	USB/LAN	USB/LAN	-	-	-	-	USB	-	-	
	HDMI CEC	Yes	Yes	Yes	Yes	Yes	Yes	-		-	-	-	-	-	-	-	-	-	-	-	-	-	-	-
	Custmized Image Setting	Yes	Yes	Yes	Yes	Yes	Yes	Yes		Yes	-	-	-	Yes	Yes	-	Yes	-	-	-	-	-	-	-
	USB Memory Network Setting	Yes	Yes	Yes	Yes	Yes	Yes	-		-	-	-	-	Yes	Yes	Yes	-	-	-	-	-	-	-	-
	Multi Input Display*2	-	-	-	-	-	-	-		-	-	-	-	-	-	-	-	-	-	-	-	-	-	-
	Input Search (No Signal Auto Switch Setting/Input Signal Search)	Yes	Yes	Yes	Yes	Yes	Yes	Yes		Yes	Yes	Yes	Yes	Yes	Yes	Yes	Yes	-	-	-	-	Yes	Yes	Yes
	Failover/Failback	Yes	Yes	Yes	Yes	Yes	Yes	-		-	-	-	-	Yes	Yes	Yes	Yes	Yes	Yes*4	Yes*4	Yes*4	Yes	-	-
	1:1Pixel Mode	-	-	-	-	-	-	Yes		Yes	Yes	Yes	Yes	Yes	Yes	Yes	Yes	-	-	-	-	Yes	-	-
	Color Management	6-axis						-		-	-	-	-	-	-	-	-	-	-	-	-	-	-	-
	Color Enhancement	Yes	Yes	Yes	Yes	Yes	Yes	Yes		Yes	Yes	Yes	Yes	Yes	Yes	Yes	Yes	Yes	Yes	Yes	Yes	Yes	-	-
	Adaptive Contrast Correction	Yes	Yes	Yes	Yes	Yes	Yes	Yes		Yes	Yes	Yes	Yes	Yes	Yes	Yes	Yes	Yes	Yes	Yes	Yes	Yes	-	-
	Refine Enhancer	Yes	Yes	Yes	Yes	Yes	Yes	Yes		-	-	-	-	-	Yes	Yes	Yes	-	-	-	-	Yes	-	-
	Gradation Smoother	Yes	Yes	Yes	Yes	Yes	Yes	-		-	-	-	-	-	Yes	-	-	-	-	-	-	Yes	-	-
	Frame Creation	Yes	Yes	-	-	-	-	-		-	-	-	-	-	-	-	-	-	-	-	-	-	-	-
	Motion Smoother	-	-	-	-	-	-	-		-	-	-	-	-	-	-	-	-	-	-	-	-	-	-
	Dynamic Backlight	Yes	Yes	Yes	Yes	Yes	Yes	-		-	-	-	-	Yes	Yes*5	Yes	-	-	-	-	-	-	-	-
	Set up Timer	Yes	Yes	Yes	Yes	Yes	Yes	Yes		Yes	Yes	Yes	Yes	Yes	Yes	Yes	Yes	Yes	-	-	-	Yes	Yes	Yes
	Off Timer Setting	Yes	Yes	Yes	Yes	Yes	Yes	Yes		Yes	Yes	Yes	Yes	Yes	Yes	Yes	Yes	Yes	Yes	Yes	Yes	Yes	Yes	Yes
	Power on Screen Delay	Yes	Yes	Yes	Yes	Yes	Yes	Yes		Yes	Yes	Yes	Yes	Yes	Yes	Yes	Yes	Yes	Yes	Yes	Yes	Yes	-	-
	Auto Setup	Yes	Yes	Yes	Yes	Yes	Yes	Yes		Yes	Yes	Yes	Yes	Yes	Yes	Yes	Yes	Yes	-	-	-	Yes	Yes	Yes
	No Activity Power Off	Yes	Yes	Yes	Yes	Yes	Yes	Yes		Yes	Yes	Yes	Yes	Yes	Yes	Yes	-	-	-	-	-	Yes	Yes	Yes
	PJ Link Protocol	Yes	Yes	Yes	Yes	Yes	Yes	Yes		Yes	Yes	Yes	Yes	Yes	Yes	Yes	Yes	Yes	Yes	Yes	Yes	Yes	-	-
	LAN Control (Network Control)	Yes	Yes	Yes	Yes	Yes	Yes	Yes		Yes	Yes	Yes	Yes	Yes	Yes	Yes	Yes	Yes	-	-	-	Yes	-	-
	Web Browser Control	Yes	Yes	Yes	Yes	Yes	Yes	Yes		Yes	Yes	Yes	Yes	Yes	Yes	Yes	Yes	Yes	-	-	-	Yes	-	-
	Remote ID Control (Function)	Yes	Yes	Yes	Yes	Yes	Yes	Yes		Yes	Yes	Yes	Yes	Yes	Yes	Yes	Yes	Yes	-	-	-	Yes	-	-
	Serial ID Control (Function)	Yes	Yes	Yes	Yes	Yes	Yes	Yes		Yes	Yes	Yes	Yes	Yes	Yes	Yes	Yes	Yes	-	-	-	Yes	-	-
	Local Dimming	Yes	Yes	-	-	-	-	Yes		-	-	-	-	Yes	Yes	Yes	Yes	Yes	Yes	Yes	Yes	Yes	-	-
	ECO Mode/Power Management Mode	Yes	Yes	Yes	Yes	Yes	Yes	Yes		Yes	Yes	Yes	Yes	Yes	Yes	Yes	Yes	Yes	Yes	Yes	Yes	Yes	Yes	Yes
	Audio Input Select (Switching)	Yes	Yes	Yes	Yes	Yes	Yes	-		-	-	-	-	Yes	Yes	Yes	Yes	-	-	-	-	Yes	-	-
SOFTWARE	Multi Monitoring & Control Software Compatible	Yes	Yes	Yes	Yes	Yes	Yes	Yes		Yes	Yes	Yes	Yes	Yes	Yes	Yes	Yes	Yes	Yes	Yes	Yes	Yes	-	-
	Early Warning Software Compatible*3	Yes	Yes	Yes	Yes	Yes	Yes	Yes		Yes	Yes	Yes	Yes	Yes	Yes	Yes	Yes	Yes	Yes	Yes	Yes	Yes	-	-
	Video Wall Manager	Yes	Yes	Yes	Yes	Yes	Yes	Yes		Yes	Yes	-	-	Yes	Yes	Yes	Yes	Yes	Yes	Yes	Yes	Yes	-	-
	Auto Display Adjustment Upgrade Kit (TY-VUK10)	-	-	-	-	-	-	-		-	-	-	-	Yes	Yes	Yes	Yes	Yes	Yes	Yes	Yes	Yes	-	-
	Content Management Software	Yes	Yes	Yes	Yes	Yes	Yes	-		-	-	-	-	Yes	-	Yes	-	Yes	-	-	-	-	-	-

*1: The number of units that can be set as a group varies depending on the model. For details, see the Operation Manual of each model.
 *2: There are restrictions on the input signal and 4-Input Multi Display function. For details, see the Operation Manual of each model.
 *3: The part number suffix may differ depending on the license type.

Note: The specifications may vary depending on the model, even for the same function. For details, see the Operation Manual of each model.